

Let's inspire and democratize SAP Digital Transformations

With SAP DXaaS Automation Platform





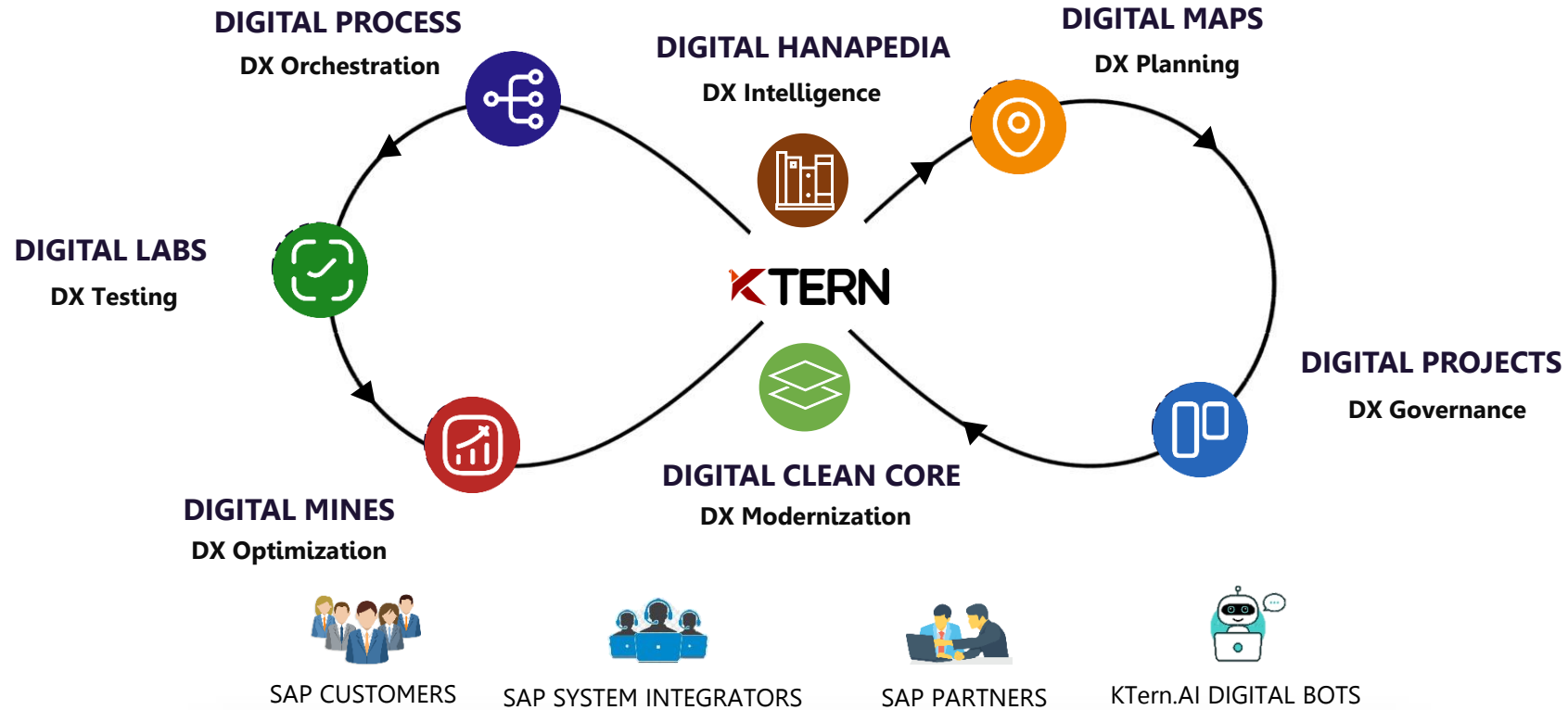
To inspire & democratize **SAP centric Digital Transformation as a Service** (SAP DXaaS) | Vision



Trusted by



Accelerate SAP-led Digital Transformation (DX) Cycles



Ktern.AI DXaaS Automation Platform with Cognitive Digital Workplace

Data-driven hyperautomation

Tribal knowledge intelligence

No-code, Non-invasive

Integrity-led experience

Pre-requisites

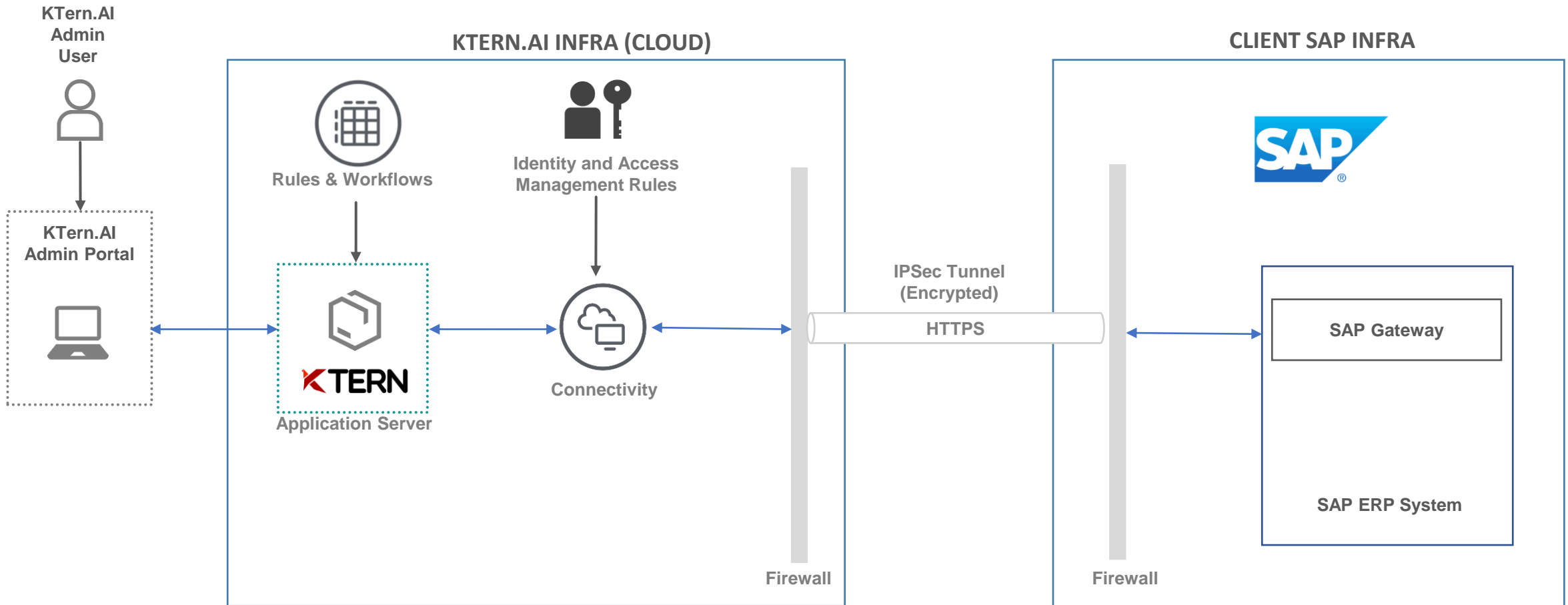
- An SAP Sandbox 'SBX' system (latest copy of SAP Production 'PRD' system) must be provided with required connection details (Application Server, System ID, Instance Number, Client Number, Username, Password).
- Last 6 months ST03N statistics of the SAP 'PRD' system must be made available in the provided SAP 'SBX' system.
- For custom code impact analysis KPI, the following SAP Notes must be studied and implemented in the SBX system: 2270689, 2485231, 2190065, 2196792.
- RFC Communication User with 'SAP_ALL' authorization profile must be ensured (READ-ONLY Access).
- Port 33xx must be accessible in client network, as it is the default SAP Gateway port (where xx refers to the Instance Number of the SAP 'SBX' system)

Reference

- If translation of IP addresses is carried out using NAT, kindly refer to this SAP Note [148832](#).
- KTERN.AI Digital Maps prerequisites rely on ST03N statistics, RFC communication user with 'SAP_ALL' authorization profile, as KTERN.AI does a read-only scan and comprehensive analysis of the business processes, custom objects and landscape of SAP system through SAP RFC protocol for assessment.
- SAP Ports reference :
<https://help.sap.com/docs/Security/575a9f0e56f34c6e8138439eefc32b16/616a3c0b1cc748238de9c0341b15c63c.html>
- SAP Gateway reference :
https://help.sap.com/saphelp_gbt10/helpdata/EN/48/ace6623b1e35bae10000000a42189d/content.htm?no_cache=true

- KTERN.AI's automated scan shall be utilized for assessment project, thanks to the communication between KTERN.AI – SAP NetWeaver RFC Connector and SAP NetWeaver Application Server by means of standard RFC protocol. It combines an easy-to-use standard business APIs provided by SAP with unprecedented performance for KTERN.AI. AI's analysis and processing using KTERN.AI. AI's inbuilt IP Engine.
- KTERN.AI IP Engine enabled RFC communication is a **non-invasive** approach, leveraging on the pre-defined, standard RFC enabled business APIs, function modules in the system and it does NOT require any 3rd party software plugins/addons to be installed in SAP system/server.
- The RFC communication is achieved through the secured SAP gateway via 33xx port, where xx is the instance number of the corresponding SAP ECC / S4HANA system. As the integration is viewed in terms of technical interoperability, KTERN.AI Customer Success Team shall guide and provide the required support for leveraging on the same to run and experience the analyzed results in KTERN.AI application for better adoption. The enablement of application users and the client IT team shall also be ensured for better transparency and viability in the overall process of KTERN.AI assessment through SAP RFC communication.

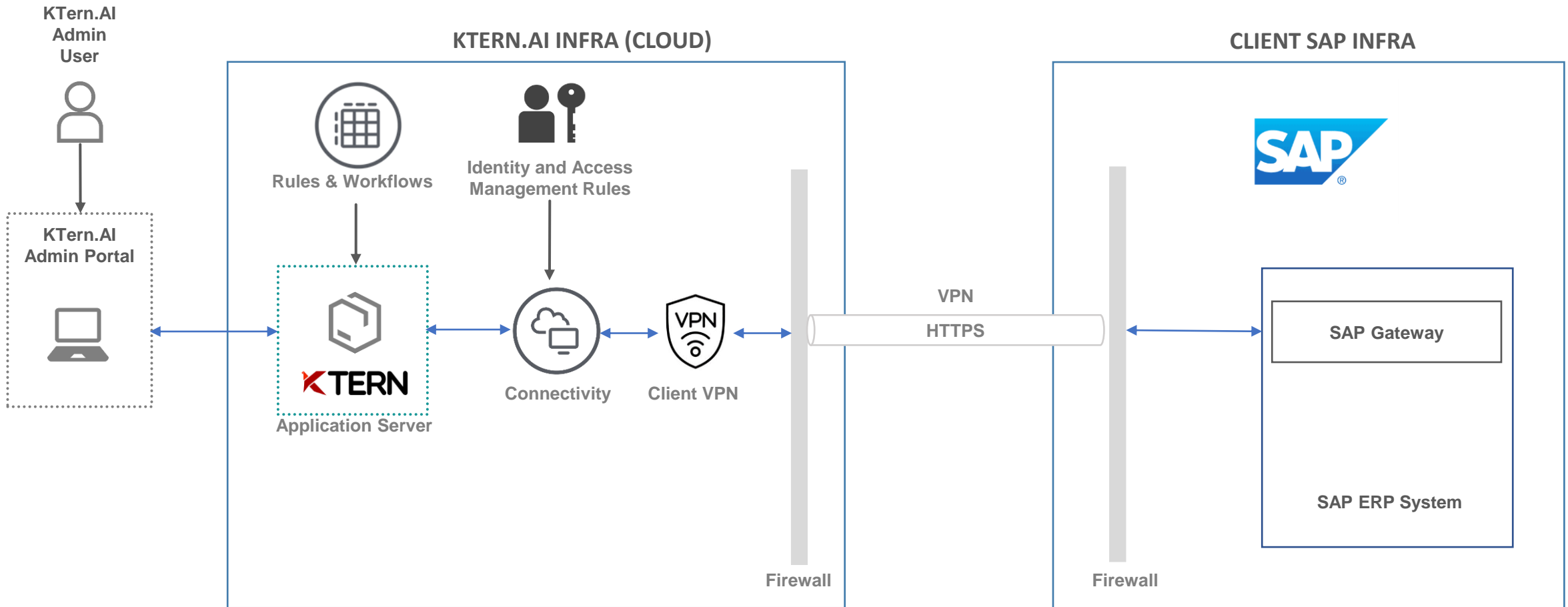
Connectivity Approach 1 – IPsec Tunneling



KTern.AI connects to SAP ERP system via standard SAP RFC protocol, in order to call RFC enabled function modules (SAP Business APIs). This connectivity can be enabled via IPsec tunnelling approach by the customer.

Note : As per SAP standard architecture guidelines, the SAP Gateway carries out RFC services within the SAP world, which are based on TCP/IP. These services enable SAP Systems & external programs to communicate with one another.

Connectivity Approach 2 – Client VPN Connection



KTern.AI connects to SAP ERP system via standard SAP RFC protocol, in order to call RFC enabled function modules (SAP Business APIs). This connectivity can be enabled via client VPN approach by the customer.

Note : As per SAP standard architecture guidelines, the SAP Gateway carries out RFC services within the SAP world, which are based on TCP/IP. These services enable SAP Systems & external programs to communicate with one another.

Approach 1 - IPSec Tunnelling

- KTERN.AI team to share the firewall details required to configure an IPSec tunnel with the client.
- Client Network Team shall generate a pre-shared key.
- Client Network Team shall configure the IPSec tunnel on client network firewall and share the required details along with the pre-shared key to the KTERN.AI team.
- KTERN.AI team to configure the IPSec tunnel in KTERN.AI firewall.
- KTERN.AI team to initiate the traffic and troubleshoot the IPSec tunnel connection if required.
- Client team to provide SAP system connectivity details (as per pre-requisites) and send it to KTERN.AI team.
- KTERN.AI team to test & establish the IPSec tunnelling & SAP system connectivity

Approach 2 – Client VPN Connection

- Client Network team to provide VPN client details along with remote gateway, port, username, password/certificate and MFA(Multiple Factor Authentication), SAP system connectivity details (as per pre-requisites) and send it to KTERN.AI team.
- KTERN.AI team to test & establish the VPN client connectivity & SAP system connectivity

Note

- In all the above approaches, the client team shall ensure stable connectivity without interruptions.

- KTern.AI, the enterprise product suite with the digital workplace for SAP digital transformations is governed by its **KTern.AI Trust Center** that takes a multifaceted approach to application security, to ensure everything from engineering to deployment, including architecture and quality assurance processes that complies with the highest standards of security and privacy.
- In view of KTern.AI Digital Maps Assessment, KTern.AI Trust Center ensures to keep your organization secure and compliant in agreement with the global standards. It will meet your policy requirements and continue to protect your data assets with our unique security features and capabilities that ensures complete transparency and privacy.
- By means of **standard RFC protocol**, KTern.AI's automation capabilities that are dependent on SAP ERP system, shall be utilized by leveraging on non-invasive communication between KTern.AI Digital Maps and SAP Netweaver Application Server. In view of the data pertaining to project tracking information and analytical results, KTern.AI Trust Center is committed to storing only the ERP transformation project information and processed results strictly in the secured KTern.AI Data Server, dedicated for KTern.AI within trusted cloud data centers.
- Ref Link : [KTern.AI Trust Center](#)

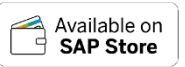
Appendix

KTern.AI vision is to inspire and democratize SAP centric Digital Transformation as a Service (DXaaS). It is an independent product division of Kaar Technologies, a pure-play SAP consulting firm with 15+ years of SAP excellence. KTern.AI offers the SAP DXaaS Automation Platform with cognitive digital workplace for enterprises. Aided by inbuilt data-driven hyperautomation, KTern.AI accelerates SAP transformations and streamlines business operations to drive productivity for SAP customers, partners, and system integrators.

KTern.AI Digital Maps offers a comprehensive assessment platform to scan and profile the process, custom objects, landscape, users, timeline and effort estimate with business transformation insights. It offers the digital workplace for Business & IT teams with integrity-led experience for driving the SAP transformation projects effectively. With no-code digital automation capabilities, KTern.AI is currently the preferred platform of **SAP's Global RISE with SAP S/4HANA Adoption Acceleration Program**.

KTern.AI is an **SAP Spotlight App**, being recognized by SAP as one of the Top 5 Apps in SAP ERP and Finance. It is one of the Top 3 Tools for SAP ERP Software in G2 Grid. KTern.AI is listed in the SAP Store, upon successful SAP Readiness and Compliance Checks. KTern.AI is an SAP Qualified Partner Packaged Solution, an SAP ERP solution that is developed by an SAP partner with its intellectual property (IP) and industry expertise that is evaluated and tested for optimized integration with SAP technologies. KTern.AI is validated by SAP as the Spotlight Partner App that allows to evolve and transform your business without the worry of integration or data and system risks, maximize your investments in SAP solutions and address your most demanding business challenges, gain immediate value, and deliver more return on your SAP solution investments.

KTern.AI – SAP Recognitions



Selected by SAP for **Global RISE Adoption Acceleration Program**



Top 3 SAP Spotlight App recognized for performance, value & customer support from 2000+ SAP Store Apps



SAP Industry Cloud recognition for KTern.AI value in industry transformations



Selected by SAP for **SAP BTP GTM** to accelerate SAP Transformations



Top 6 software partners in **SAP's Delivery Project Automation Program**



4.7 rating in G2-SAP Store attributing to **Top 3 Highest Rated Tools** for ERP Software

SAP Co-Innovation Lab

Selected by SAP for **SAP Co-Innovation on Generative AI**



Officially recognized as part of **SAP ALM Partner Hub** for Integration



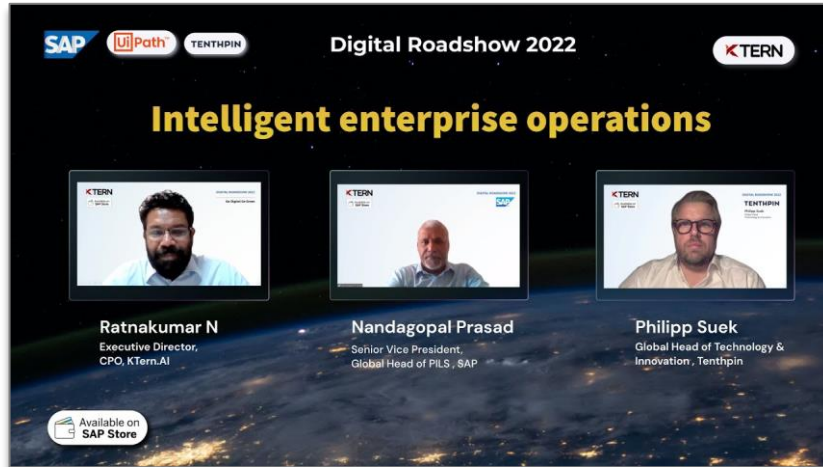
Invited by SAP for TechEd Session



SAP Gold Sponsor for ALM Summit

Digital Roadshow

Co-branded SAP Virtual Event



[KTern.AI Digital Roadshow 2022 on Intelligent Enterprise Operations with Nandagopal – Senior Vice President, SAP](#)



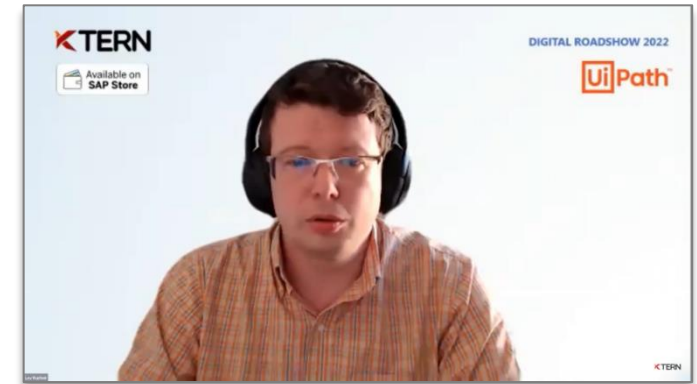
[SAP TechEd – Data Driven Digital Transformations enabled by RISE with SAP & KTern.AI with Sven Denecken – SVP & CMSO for Industries, SAP](#)



[KTern.AI Webinar on SAP Transformations with Jan Musil – CPO, SAP Activate, SAP](#)



[KTern.AI for RISE with SAP with ALM Leadership Team at SAP Labs](#)



[KTern.AI Webinar on Intelligent SAP DevOps with Lev Kushnir – Director, UiPath](#)

How can Digital Transformation as a Service (DXaaS) be Accelerated and Streamlined?

Embracing automation-driven productivity with KTern.AI on SAP® Store for SAP S/4HANA-based transformation

Techedge, a global digital advisory business, helps organizations evolve into true digital companies through short iterative cycles of business-driven innovation. Techedge chose KTern.AI on SAP Store for automation and to move to SAP S/4HANA to accelerate and streamline business transformations.

KTern.AI helped Techedge simplify and orchestrate the work for the team in SAP S/4HANA-based transformation that was enabled by the RISE with SAP offering. This helped ensure governance and transparency in their enterprise operations.



[KTern.AI SAP DXaaS Success Story featured by SAP - Techedge](#)

BUILDING AN SAP S/4HANA BUSINESS CASE FOR A HOME DÉCOR PRODUCTS MANUFACTURER IN USA



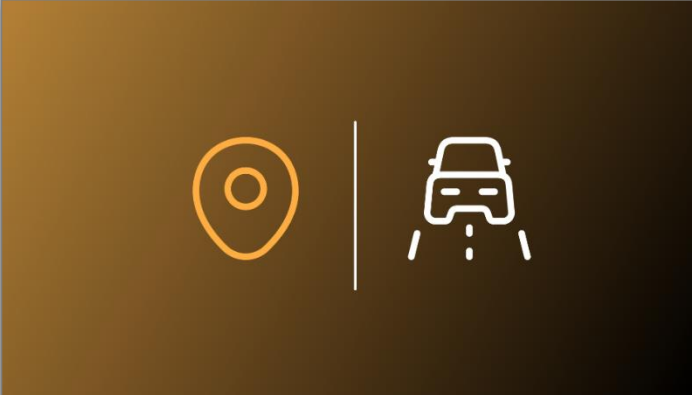
[Building a RISE with SAP S/4HANA Business Case for a Home Decor Products Manufacturer in USA - Linon](#)



KTern.AI for RISE with SAP



[How Middle East based Defence Industry leveraged KTern.AI to Become an Intelligent Enterprise - Military Industries Corporation](#)



[How US based Electrical & Electronics Manufacturer Adopts KTern.AI for S/4HANA Transformation - Mitsubishi](#)

emphasys

emphasys: Using impact analysis and planning riskless SAP S/4HANA® transformations

emphasys is a leading company specializing in SAP implementations and cloud migrations, dedicated to helping businesses swiftly transition to the cloud while ensuring cost-effectiveness. In the ever-evolving digital landscape, emphasys stands as a trusted partner, orchestrating smooth transitions and offering data-driven solutions.

emphasys applies advanced automation capabilities to conduct a comprehensive assessment of their customer's existing system and evaluates the effects of a digital transformation. Through this approach, emphasys efficiently organizes and automates enterprise operations, allowing them to achieve project milestones and give cost-effective solutions to their clients.



[How Australia based Professional Services firm leveraged KTern.AI for SAP Scope Item driven S/4HANA Planning – Emphasys for UGL](#)

KTERN.AI

SAP SPOTLIGHT APP

© 2024 Limited to KTERN. All rights reserved. No part of this publication may be reproduced or transmitted in any form or for any purpose without the express permission of KTERN or an KTERN affiliate company. KTERN product and its services mentioned herein as well as their respective logos are trademarks or registered trademarks of KTERN in United States and other countries. Some software products marketed by KTERN and its distributors contain proprietary software components of other software vendors. National product specifications may vary. These materials are provided by KTERN or an KTERN affiliate company for informational purposes only, without representation or warranty of any kind, and KTERN or its affiliated companies shall not be liable for errors or omissions with respect to the materials. The only warranties for KTERN or KTERN affiliate company products and services are those that are set forth in the express warranty statements accompanying such products and services, if any. Nothing herein should be construed as constituting an additional warranty. In particular, KTERN or its affiliated companies have no obligation to pursue any course of business outlined in this document or any related presentation, or to develop or release any functionality mentioned therein. This document, or any related presentation, and KTERN's or its affiliated companies' strategy and possible future developments, products, and/or platform directions and functionality are all subject to change and may be changed by KTERN or its affiliated companies at any time for any reason without notice. The information in this document is not a commitment, promise, or legal obligation to deliver any material, code, or functionality. All forward-looking statements are subject to various risks and uncertainties that could cause actual results to differ materially from expectations. Readers are cautioned not to place undue reliance on these forward-looking statements, which speak only as of their dates, and they should not be relied upon in making purchasing decisions.