

SAP BUSINESS TECHNOLOGY PLATFORM | EXTERNAL

Integration Guide

SAP Process Automation with SAP S/4HANA Cloud – Sample Content

Table of Contents

Table of Contents	2
Overview	3
Required SAP Business Technology Platform Services	4
Setup and Configuration	5
Configure communication user in SAP S/4HANA Cloud	5
Configure communication system in SAP S/4HANA Cloud	6
Configure communication arrangement in SAP S/4HANA Cloud.....	7
Download integration package in Cloud Integration	8
Maintain communication user in Cloud Integration	8
Configure and deploy integration flows in Cloud Integration.....	9
Download JSON file from integration flow in Cloud Integration	10
Create destination in BTP Cockpit	11
Add destination in SAP Process Automation.....	12
Create Action project in SAP Process Automation	13
Use Action within process builder in SAP Process Automation	13

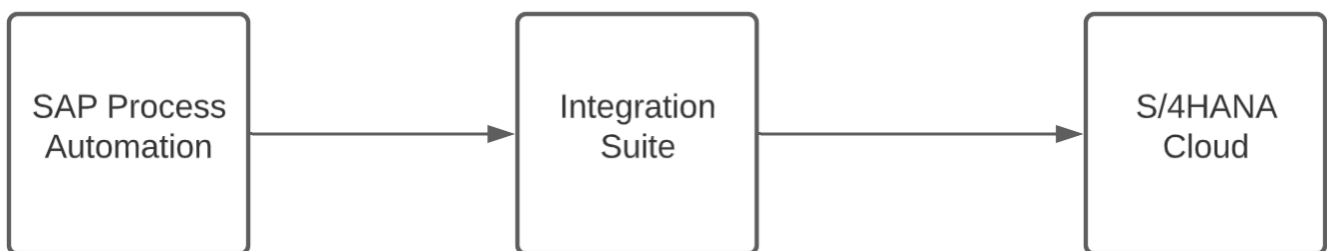
Overview

This document provides information about configuration steps to setup the integration content to consume Actions in SAP Process Automation to create multiple objects in SAP S/4HANA Cloud. The primary audience of this document is citizen developers, integration administrators and developers.

The integration package comprises multiple integration scenarios between SAP Process Automation and SAP S/4HANA Cloud as sample content. This integration package should be used to give a citizen developer a quick start into setting up the first integrations with SAP Process Automation. It is not advised to use this content productively. It is recommended for customers to adapt this content to the need of the integration scenarios accordingly.

The integration package includes scenario for the creation of following objects in SAP S/4HANA Cloud via the Actions in SAP Process Automation:

- Cost Center
- Business Partner (Customer/Supplier)
- Commercial Project
- Purchase Requisition Item



Required SAP Business Technology Platform Services

This integration package is intended to be used for SAP S/4HANA Cloud and requires the following services in SAP BTP:

- SAP Process Automation
- SAP Integration Suite

You will also require access to BTP Cockpit of the subaccount of SAP Process Automation

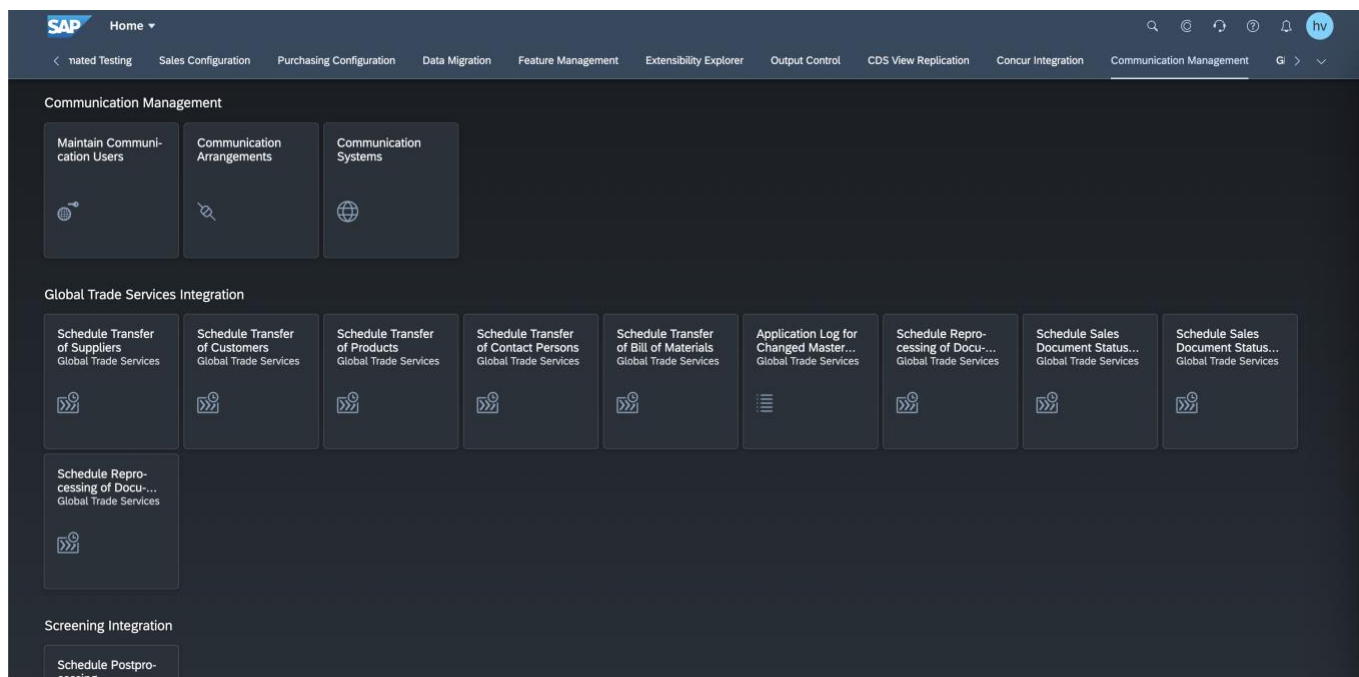
Setup and Configuration

This section will explain how to setup the integration content.

Configure communication user in SAP S/4HANA Cloud

Logon to SAP S/4HANA Cloud and go to the tab “Communication Management”.

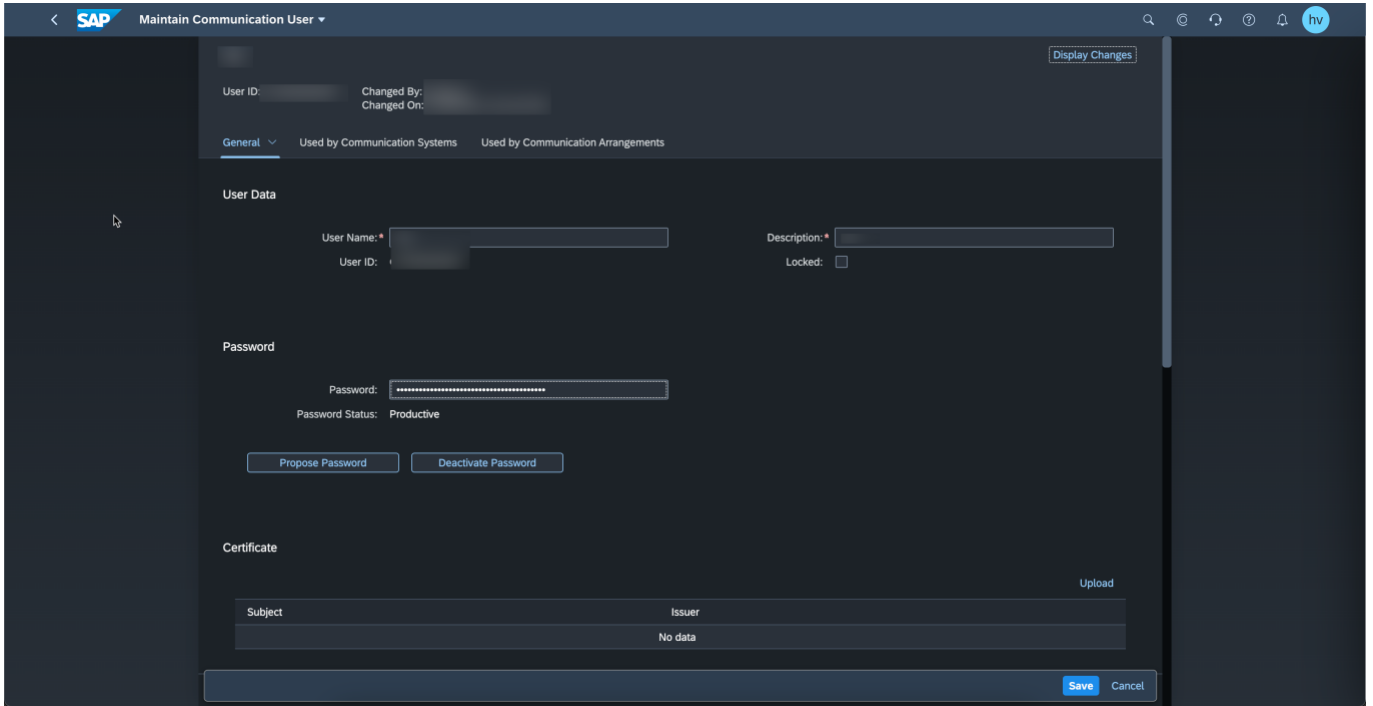
Under that tab you can find three applications, that you will be using in the next three steps to activate your API.



First of all go to the application “Maintain Communication Users”.

There create a new user, give the user a password and a description.

Then press save.

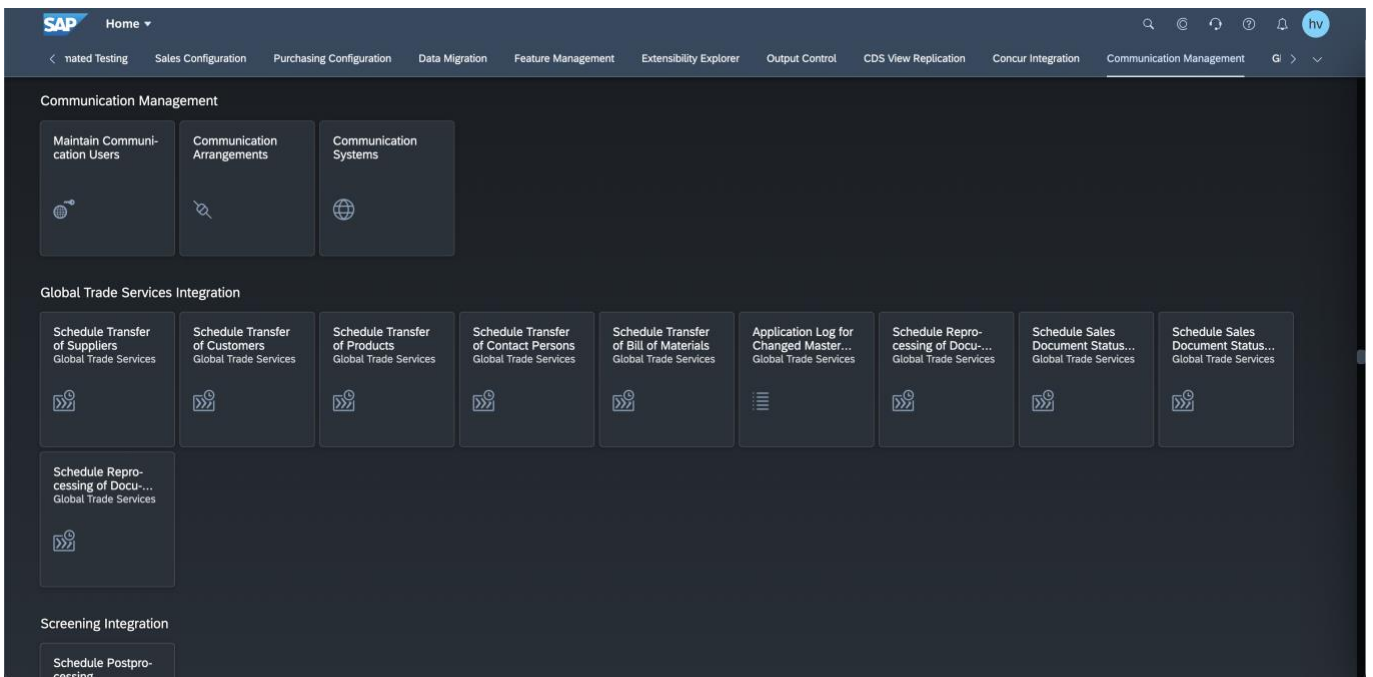


Configure communication system in SAP S/4HANA Cloud

Once you have created the communication user, you now need to create the communication system.

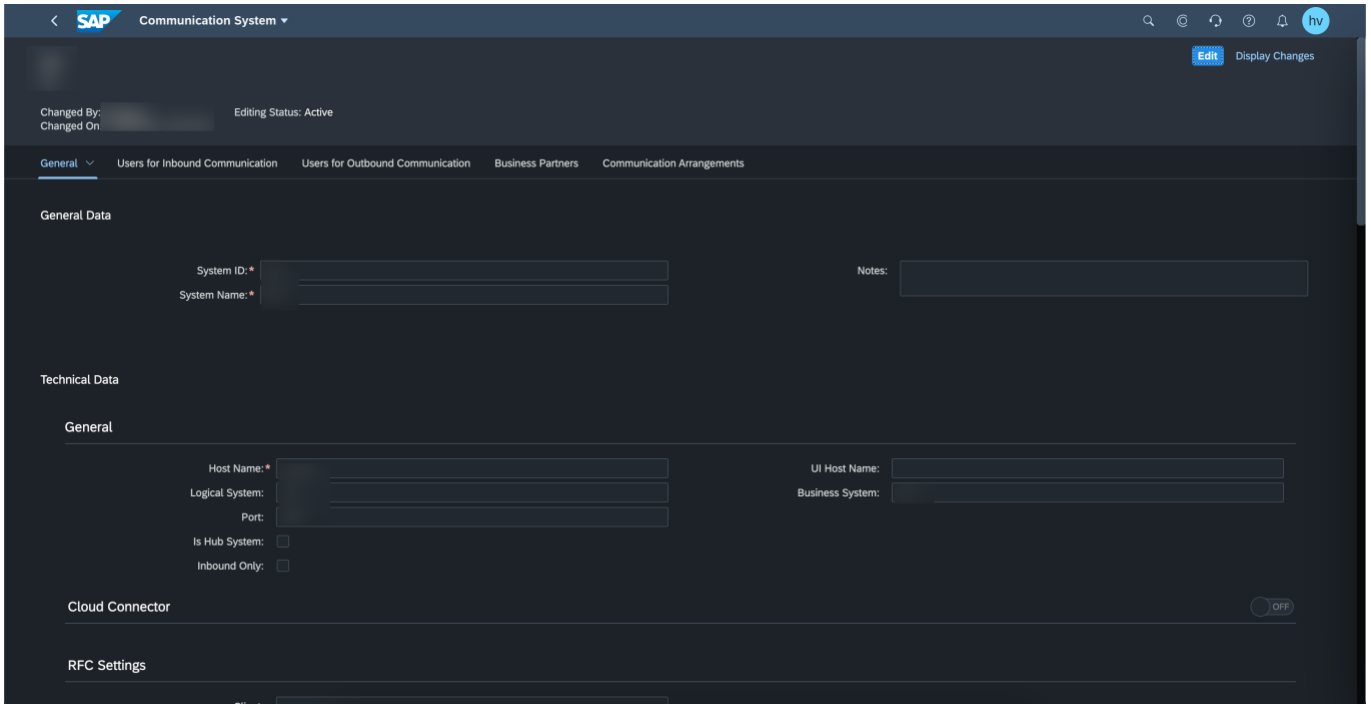
The communication system is the system that will call the API in SAP S/4HANA Cloud using that newly created communication user.

Under the tab “Communication Management”, go to the application “Communication Systems”.



Maintain a communication system. For this integration package as we only call APIs inbound into the SAP S/4HANA Cloud system and do not need to send data from SAP S/4HANA Cloud to an external system, anything can be maintained as URL and ID.

Please also maintain a Business System, some communication arrangements will require this.



In the tab “Users for Inbound Communication” select your newly created communication user.

In the tab “Users for Outbound Communication” select client-certificate (you might need to create a new one, however as we are not sending data out of SAP S/4HANA Cloud in any of these scenarios, this will not be used).

Then press save.

Configure communication arrangement in SAP S/4HANA Cloud

Once you have created your communication user and system, you will need to create your communication arrangement.

The arrangement contains the relevant APIs that you want to call.

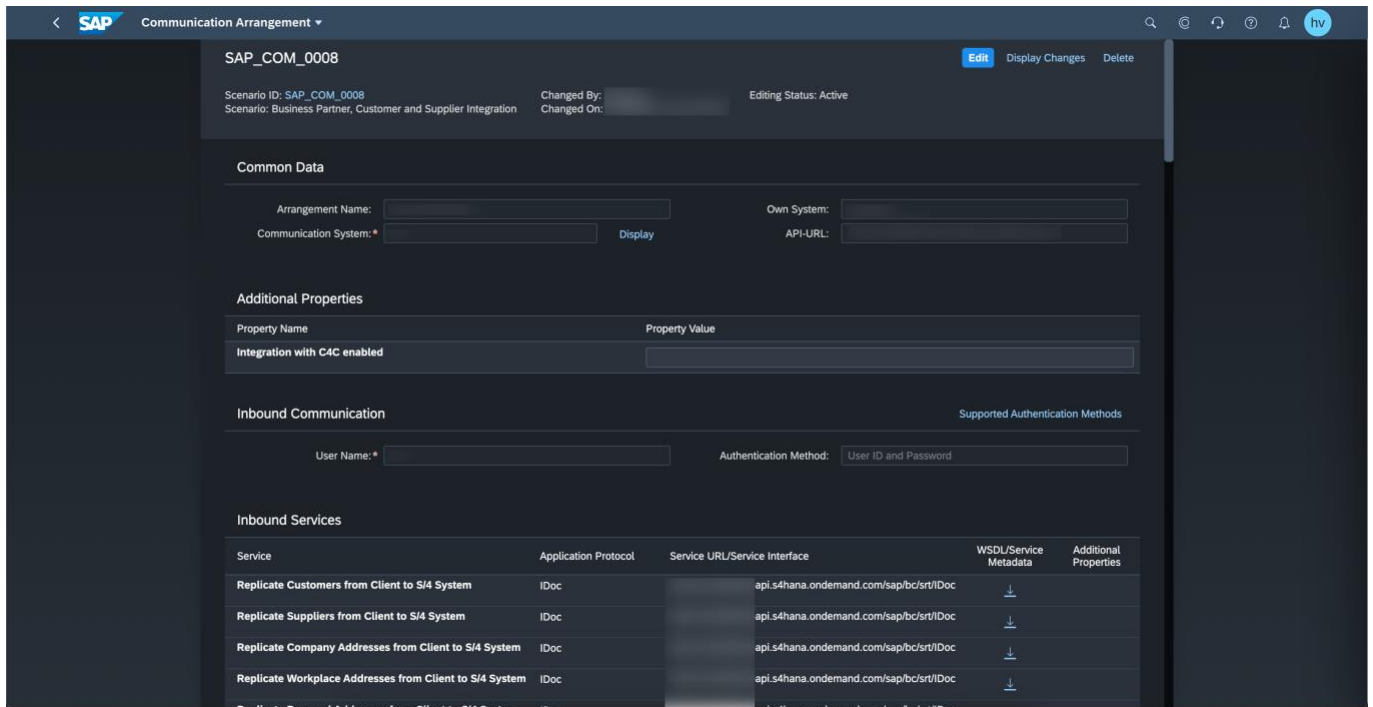
Depending on the scenario, please activate the respective communication arrangement.

Cost Center: Finance – Accounting Master Data Integration (SAP_COM_0179)

Purchase Requisition: Purchase Requisition Integration (SAP_COM_0102)

Business Partner: Business Partner, Customer and Supplier Integration (SAP_COM_0008)

Commercial Project: Commercial Project Integration (SAP_COM_0054)



Select your newly created communication system within the communication arrangement.

Then press save.

For additional information on the activation of communication arrangements in SAP S/4HANA Cloud, please refer to following blogs:

<https://blogs.sap.com/2018/08/17/s4hana-cloud-integration-microsoft-excel/>

<https://blogs.sap.com/2018/04/10/s4hana-cloud-integration-commercial-project-part-1/>

Download integration package in Cloud Integration

Logon to your Cloud Integration tenant and select the tab “Discover”.

Search for the package name “SAP Process Automation Integration with SAP S/4HANA Cloud - Sample Content”.

Select the integration package. On the top right corner, click on “copy” to create a copy of this integration package in your tenant.

Maintain communication user in Cloud Integration

Go to the tab “Operate and monitor integration scenarios” in your Cloud Integration tenant and click on Security Material.

Create a new user credential and fill in the information of the user and password you created in SAP S/4HANA

Cloud as communication users.

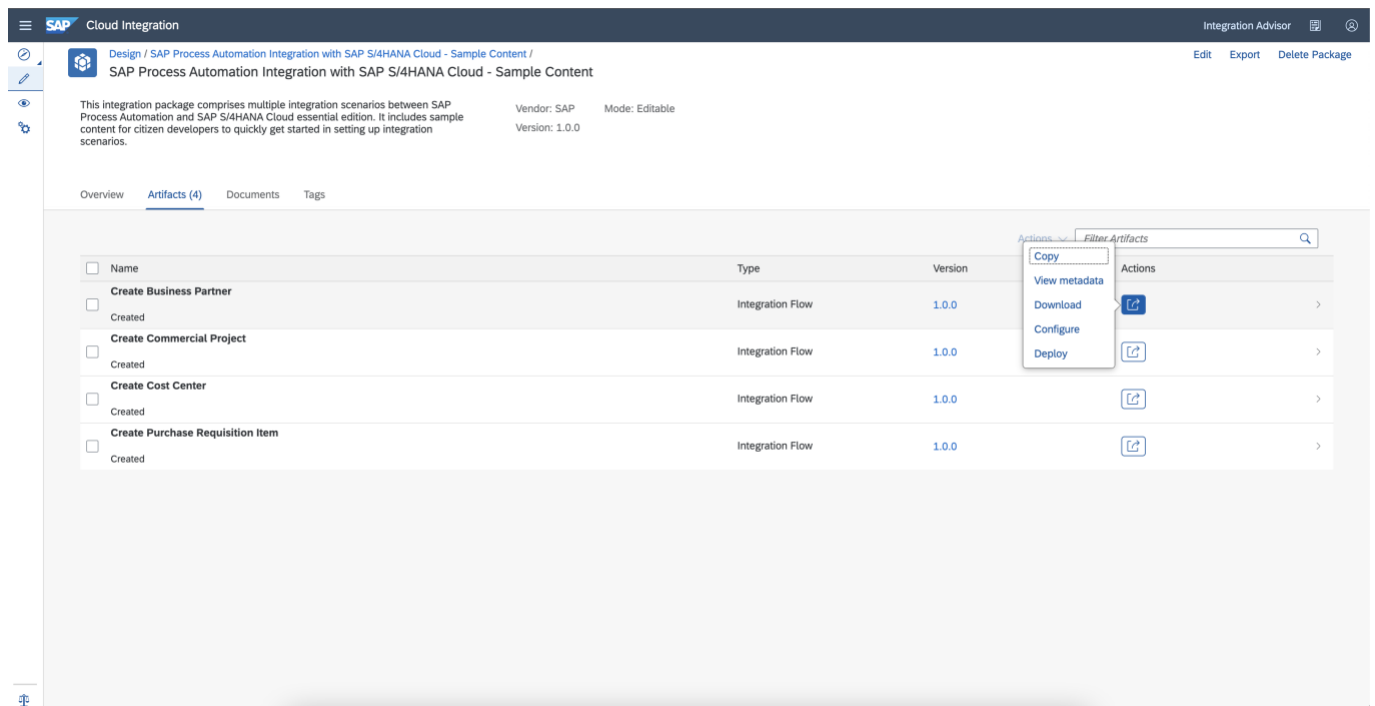
Note down the name of the user you just created. You will need to insert this name into the integration flow in the next step.

Configure and deploy integration flows in Cloud Integration

Go to the integration package “SAP Process Automation Integration with SAP S/4HANA Cloud - Sample Content” where you just made a copy of.

Select the artifact tab.

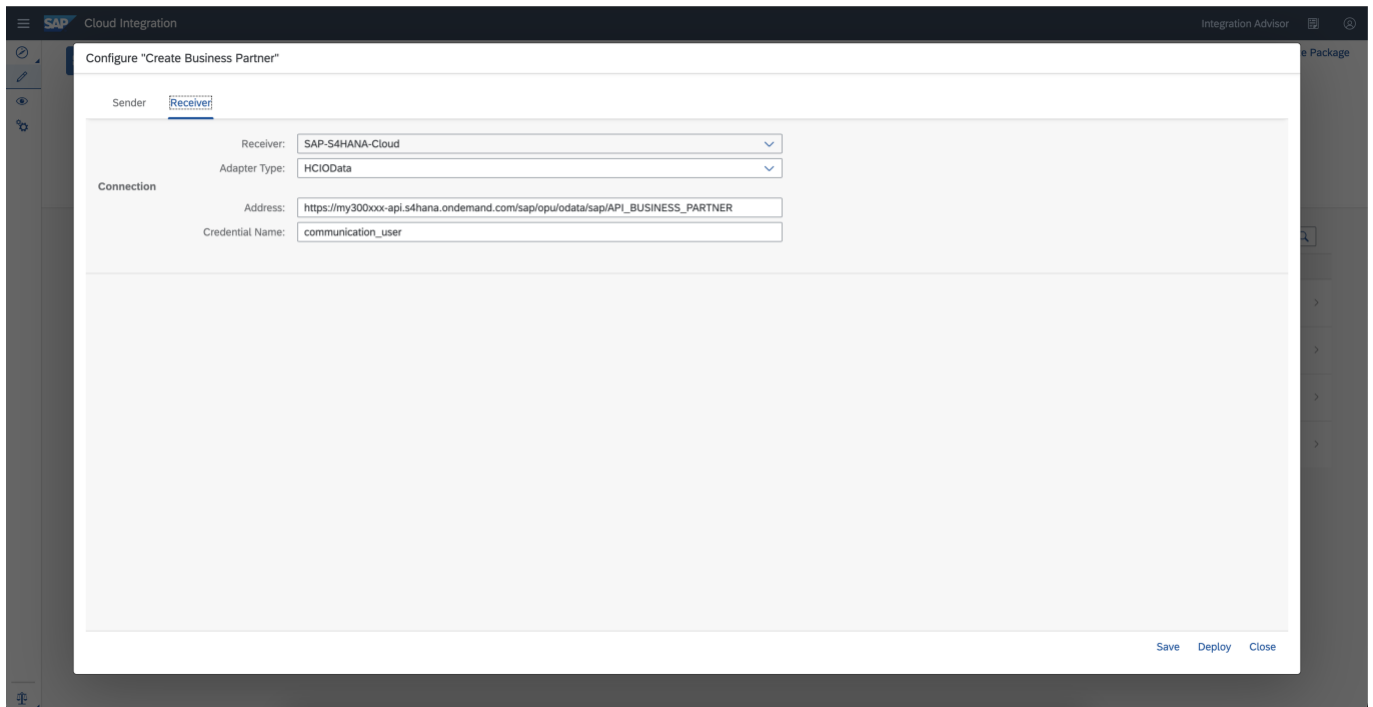
Click on the icon on the right of the integration flow you want to deploy and press “Configure”.



Go to the tab “receiver” and maintain the endpoint of your API in SAP S/4HANA Cloud.

The endpoint can be found in the communication arrangement in SAP S/4HANA Cloud.

And also maintain as the communication user the user you just created under security material in Cloud Integration.



Then press deploy.

Download JSON file from integration flow in Cloud Integration

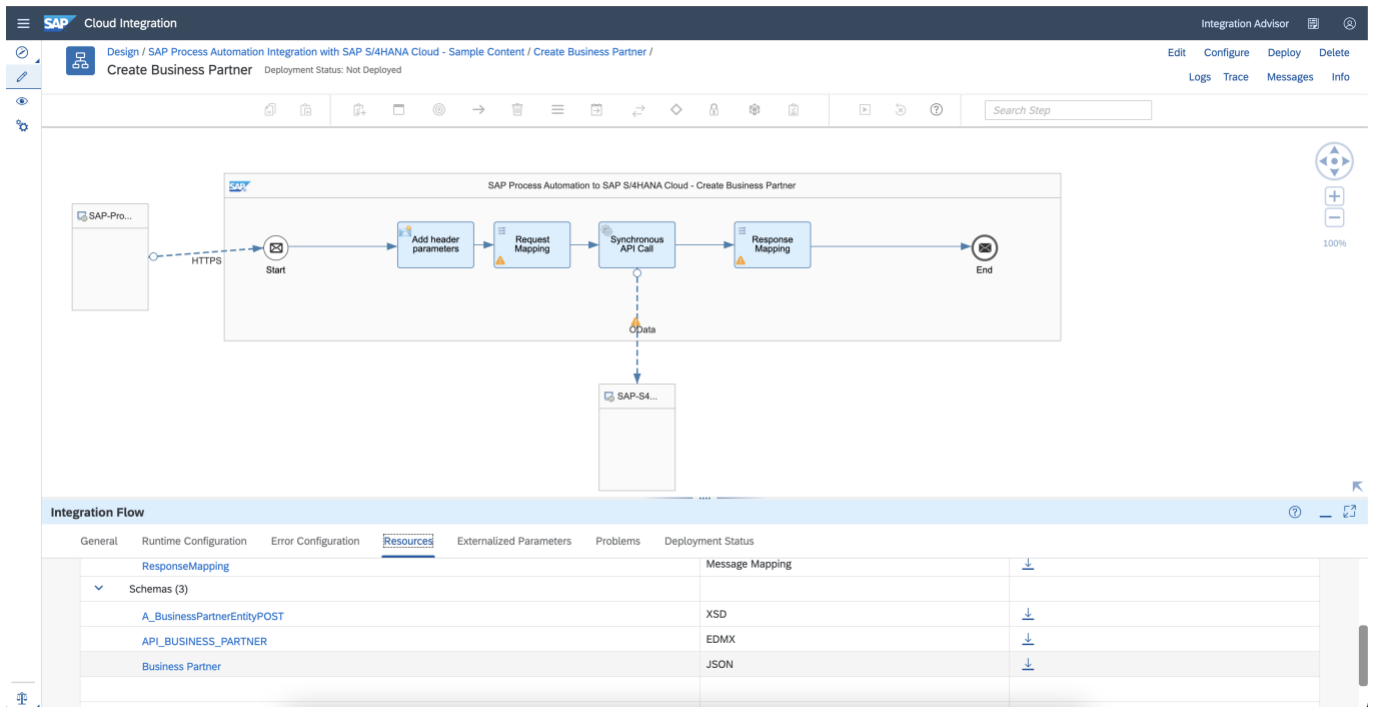
Click on the integration flow you just deployed.

Under the tab "resources" you can find a JSON file.

Download this JSON file, you will need it for the next step.

Open the JSON file and adapt the following parameter to your Cloud Integration runtime:

"url": "https://xxxxx-iflmap.xxxxxx.xxx.hana.ondemand.com"



Create destination in BTP Cockpit

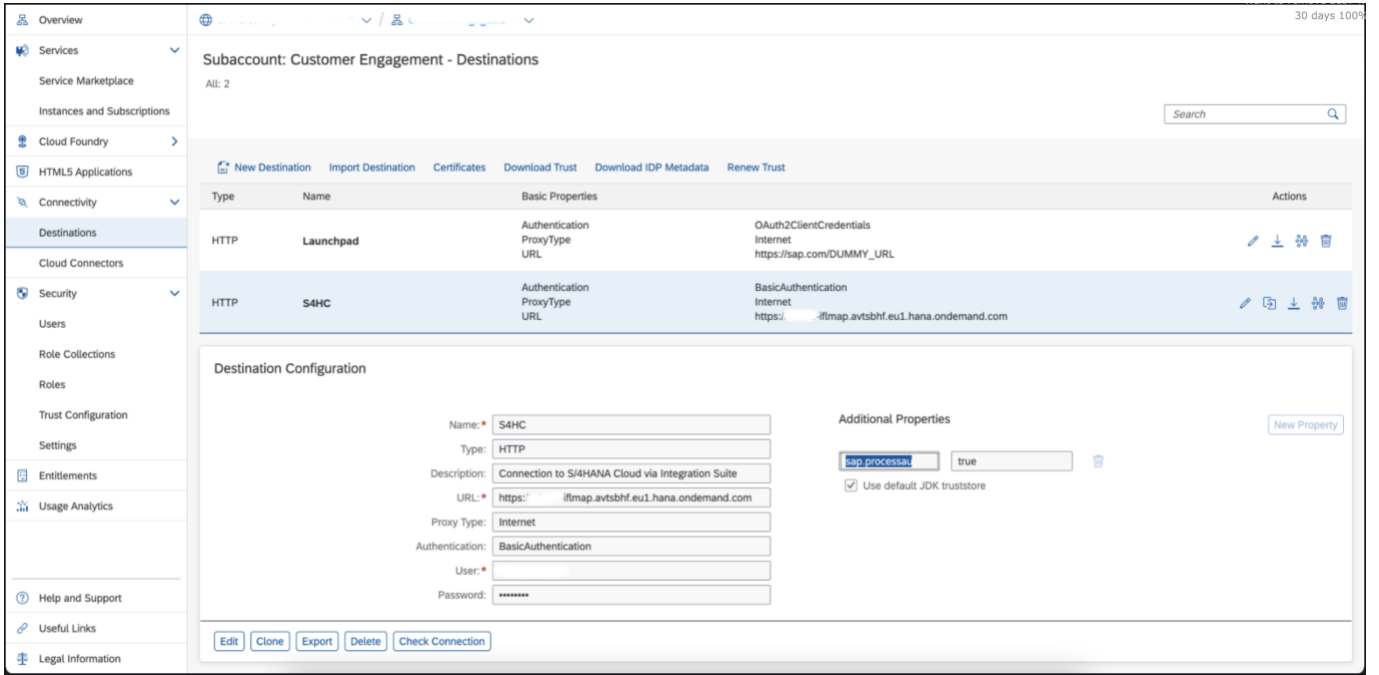
Logon to the subaccount of your SAP Process Automation tenant in the BTP cockpit.

Click on the tab "Destinations".

Create a destination that points to your Cloud Integration runtime. The URL should look like this: <https://xxxxx-iflmap.xxxxxxx.hana.ondemand.com>.

Maintain the technical user and password that has the role ESB.Messaging.send of the Cloud Integration tenant as basic authentication.

Also maintain following parameter `sap.processautomation.enabled=true`.

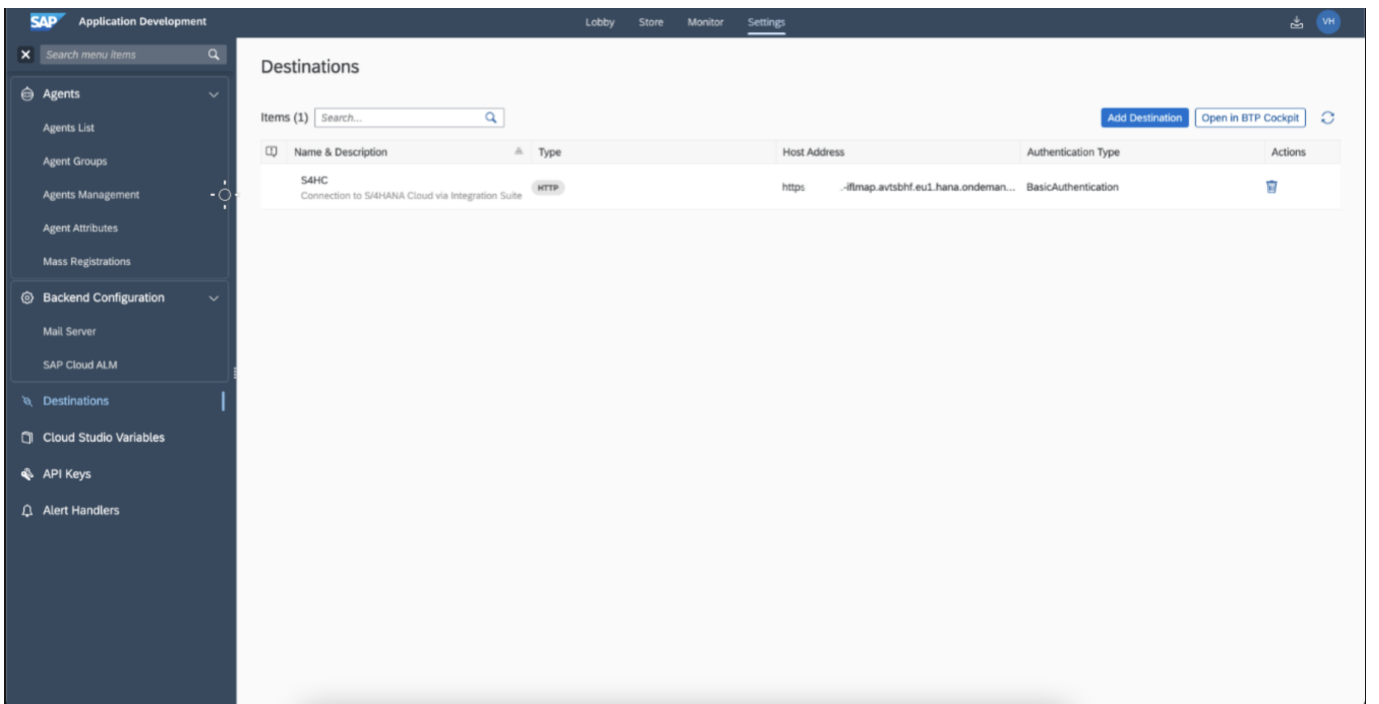


Add destination in SAP Process Automation

Logon to SAP Process Automation, select the tab “Settings”.

Go to the tab “Destination” and click “Add destination”.

You should see your newly created destination that you can add.



Create Action project in SAP Process Automation

Logon to SAP Process Automation. On the right side, click on “Create”, then “Actions Project”.

The screenshot shows the SAP Process Automation interface. At the top, there is a navigation bar with 'SAP Application Development' and tabs for 'Lobby', 'Store', 'Monitor', and 'Settings'. Below the navigation bar, there is a 'Quick Start' section with four cards: 'Create an Automation', 'Create a Form', 'Create a Process', and 'Browse Content'. Below this, there is a table titled 'All Projects (6)'. The table has columns for Name, Version, Type, Last Accessed, and Collaborators. A dropdown menu is open over the table, showing options for 'Business Process' and 'Actions Project'. The 'Actions Project' option is highlighted.

Name	Version	Type	Last Accessed	Collaborators
Kontoeröffnung Kontoeröffnung / Debitorenanlage	Editable	Business Process	Jan 20, 5:24 pm	Me
Purchase Requisition Pre-Approval process of the purchase requisition creation	Editable	Business Process	Jan 20, 9:45 am	Everyone
Outlook SDK The Outlook SDK package is a collection of activities allowing you to create automations using Microsoft...	1.20.35 Released	Business Process	Jan 19, 3:35 pm	Everyone
Excel SDK The Excel SDK package is a collection of activities allowing you to create automations using Microsoft Excel.	1.20.35 Released	Business Process	Jan 19, 3:33 pm	Everyone
Core SDK The Core SDK package contains main methods and	1.20.35 Released	Business Process	Jan 19, 3:33 pm	Everyone

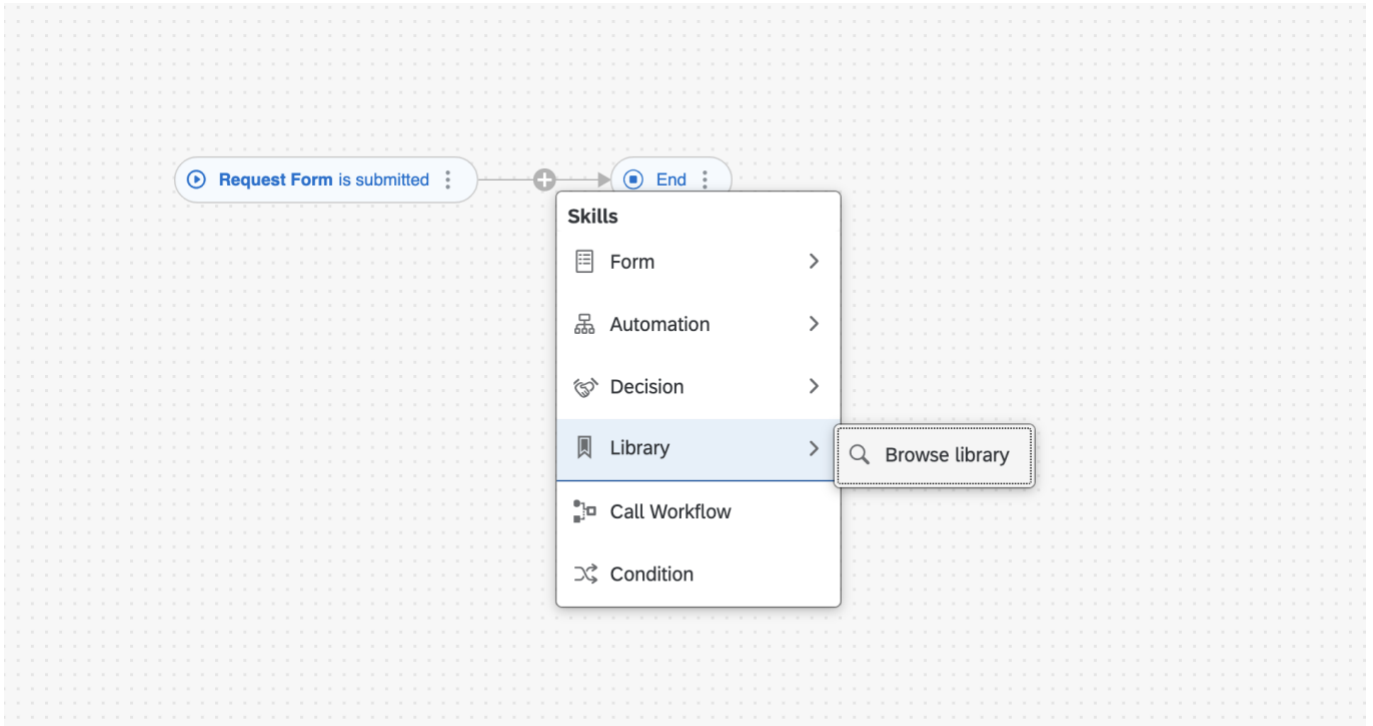
Give the Actions project a name and upload the JSON file you just downloaded. Release and publish your actions project to the library.

The screenshot shows a project management menu with four options: 'Rename Project', 'Release', 'Publish to Library', and 'Delete'. The 'Publish to Library' option is highlighted.

Use Action within process builder in SAP Process Automation

Create a process project and then a process within it.

Then press on the “+” icon and under library click on “browse library”.



A pop-up appears and you should be able to find and select your newly created action

Browse library

BP002

Add

Action

Business Partner
Create a Business Partner
(Customer/Supplier) in S/4HANA Cloud

BP01

Add

Action

Commercial Project
Create a commercial project in S/4HANA
Cloud

CP01

Add

Action

Cost Center
Create a cost center in S/4HANA Cloud

BP003

Add

Action

Business Partner
Create a Business Partner
(Customer/Supplier) in S/4HANA Cloud

BP001

Add

Action

Commercial Project
Create a new commercial project in S/4HANA
Cloud

cp

Add

Action

Custom_CreatePurchaseRequisition

Close