



Interos Supply Chain Risk Intelligence for SAP Ariba Supplier Risk

Integration User Guide

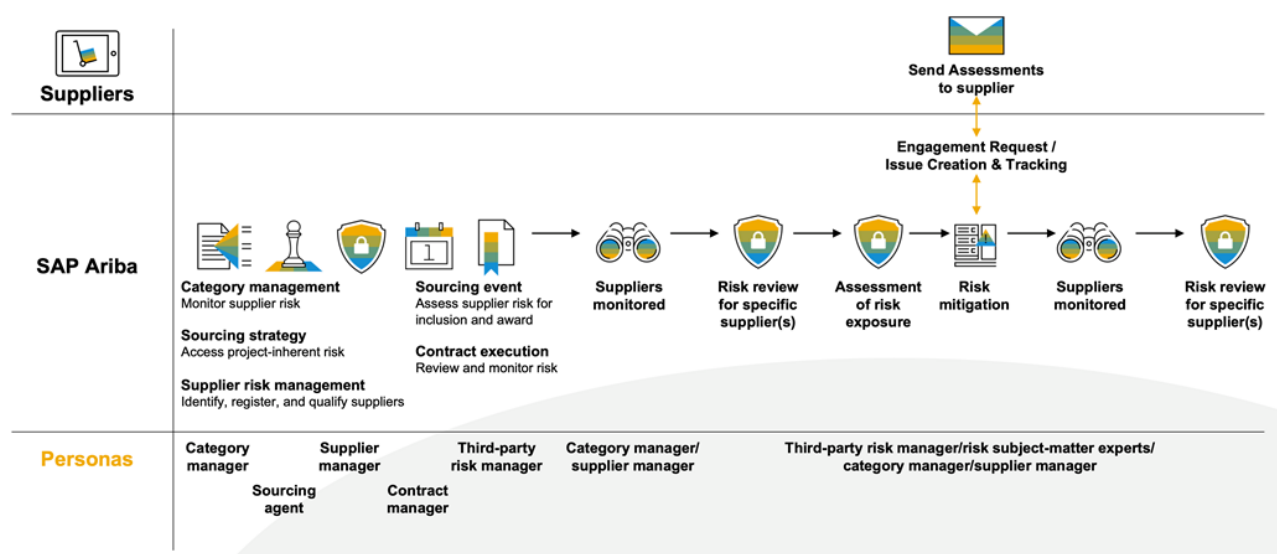
Introduction	3
Monitor Existing Suppliers	3
View Individual Supplier Risk.....	6
Support Information.....	9

Introduction

Understanding a supplier's risk is an important factor in deciding whether and how to do business with the supplier.

The Interos Supplier Risk Intelligence integration with Ariba Supplier Risk essentially turbo charges the supplier risk intelligence available within your Ariba system so you can proactively manage risk across your extended supply chain.

Supplier risk – third-party engagement process



Combining the deep supplier risk intelligence available from Interos with the comprehensive supplier management functions in Ariba creates a powerful tool to efficiently and proactively manage risk across your extended supply chain.

- Pre-screen potential suppliers before inviting to sourcing projects
- Assess and explore risks during due diligence and onboarding
- Anticipate and mitigate disruptions with continuous monitoring
- Instantly view broad and deep risk assessments
- Identify your suppliers' risky sub-tier suppliers
- Conduct reviews with the most up-to-date risk data

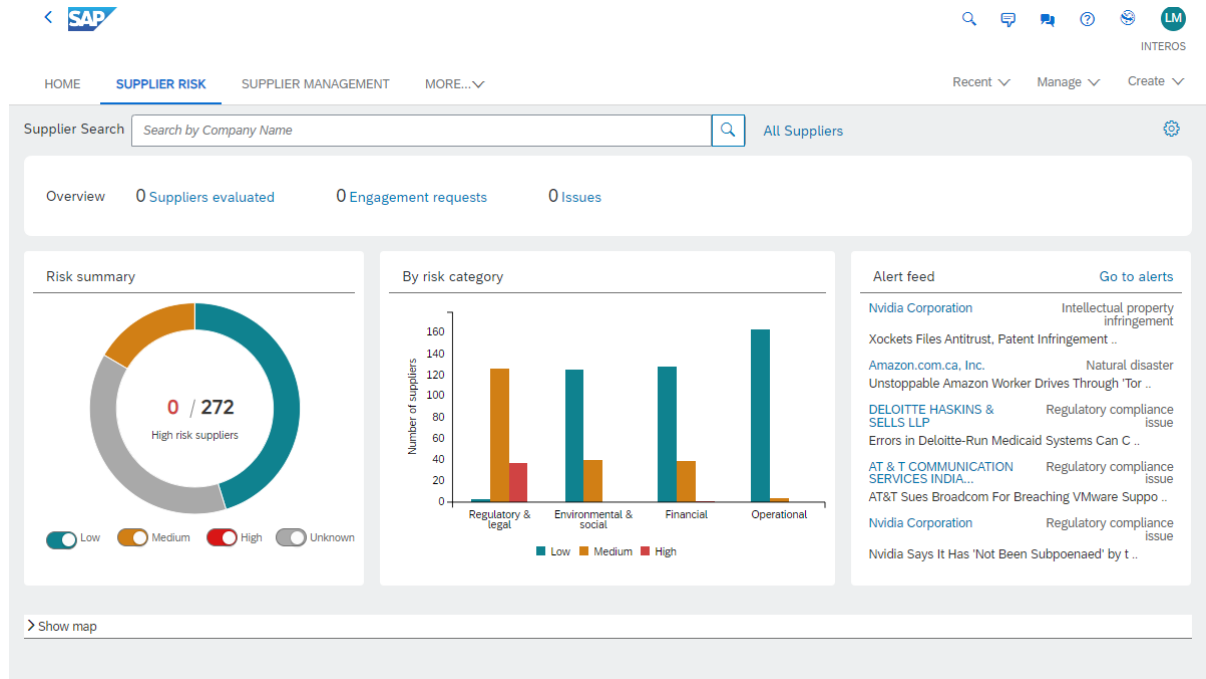
This user guide will focus on how to view the Interos supplier risk information available through the integration with Ariba Supplier Risk and should be considered a companion guide to the full SAP Ariba Supplier Risk usage documentation [here](#).

Monitor Existing Suppliers

Supplier Risk Dashboard

The Supplier Risk dashboard provides a high-level view of risk levels for your **followed** suppliers. You can use it as a starting point to identify and focus on trends and recent activities of interest or concern and zero in on your highest risk suppliers.

You can drill into the charts to view supplier lists by risk level or category, then into specific supplier profiles. You can also use the search bar to search for a supplier directly.



How to Follow Suppliers

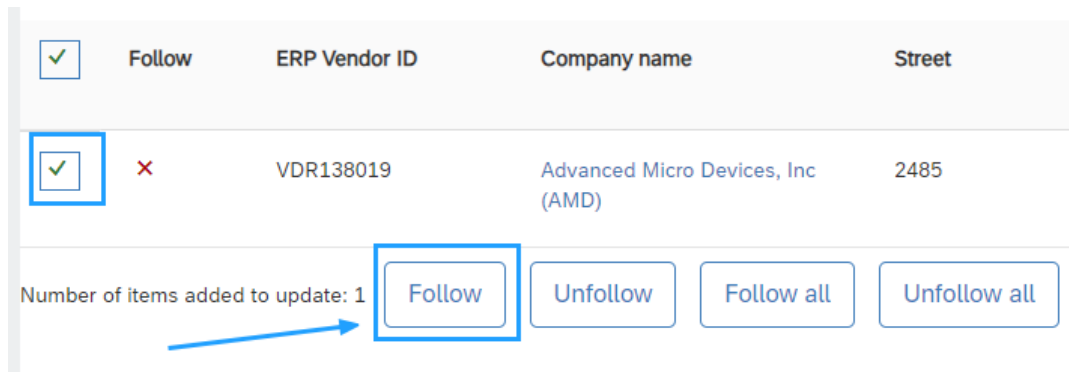
If you've not yet configured your Ariba Supplier Risk Dashboard view, you'll need to "Follow" the suppliers you want to monitor so the Ariba Supplier Risk Dashboard reflects the information in Risk Summary & By risk category charts as shown above.

To "Follow" a supplier or all suppliers, go to the Supplier Risk tab within Ariba Supplier Risk and check the box for individual suppliers or check the top box to follow the entire list of suppliers.

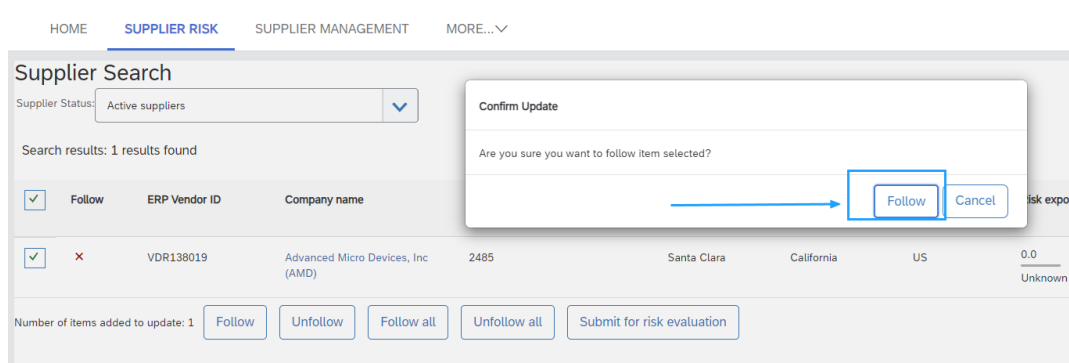
The screenshot shows the 'Supplier Search' results page. The search results are displayed in a table with columns: ERP Vendor ID, Company name, Street, City, State, Country/Region, Risk exposure, Enriched, Profile published, and Monitoring status. A 'Follow' column is added to the left of the table, with checkboxes for each row. The top checkbox is checked, and a blue box highlights the 'Follow' column header. A blue arrow points to the checkbox for 'VDR138019'.

Follow	ERP Vendor ID	Company name	Street	City	State	Country/Region	Risk exposure	Enriched	Profile published	Monitoring status
<input checked="" type="checkbox"/>	INTEROS002	Nvidia Corporation	2788	SANTA CLARA	Not available	US	26.0 Low	✓	Aug 5, 2024	✓
<input checked="" type="checkbox"/>	VDR19005	Amazon.com, Inc.	410 Terry Ave N	SEATTLE	Washington	US	34.0 Medium	✓	Aug 5, 2024	✓
<input checked="" type="checkbox"/>	0071e75-080d-4b81-9865-bc03d5a2ce28	Palo Alto Networks Inc.	3000 Tannery Way	Santa Clara	CA	US	26.0 Low	✓	Aug 5, 2024	✓
<input checked="" type="checkbox"/>	VDR138019	Advanced Micro Devices, Inc (AMD)	2485	Santa Clara	California	US	0.0 Unknown	✓	Aug 21, 2024	✓
<input checked="" type="checkbox"/>	VDR125004	Test Supplier SLP 02 G&G Inc	2121 Loid Street	Dallas	Texas	US	0.0 Unknown	✗	Aug 20, 2024	✗

After checking the supplier check box(es), click on the “Follow” button.



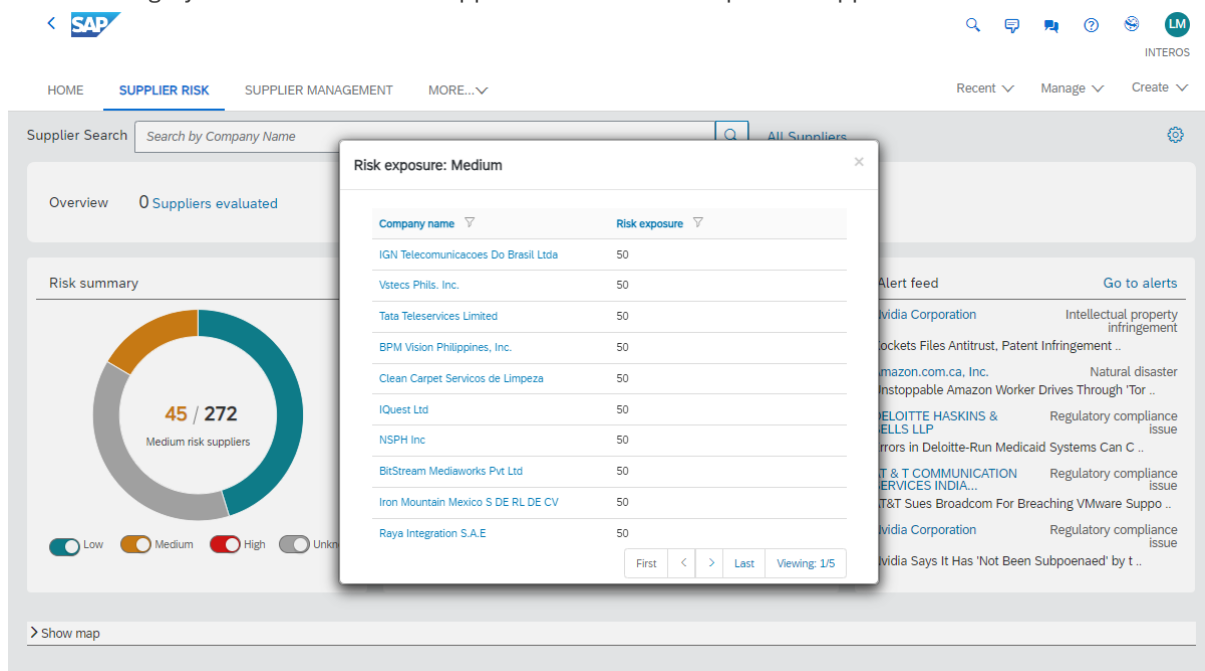
Click the “Follow” button again to confirm.



The suppliers you followed will now be included in the Ariba Supplier Risk Dashboard summary view.

Explore Risk Areas

From the Supplier Risk Dashboard, click on a risk level section of the pie chart or one of the bars on the risk category chart to see a list of suppliers or search for a specific supplier in the search bar.



View Individual Supplier Risk

Depending on your Ariba environment configuration and the process step you are performing, you will access the Supplier’s 360 Profile below through various navigation paths:

- 1) Monitoring Supplier Risk – select or search for the supplier from the Supplier Risk Dashboard
- 2) Evaluating new suppliers
 - a. Supplier Management Workspace within the SLP module
 - b. Sourcing project within the Sourcing module

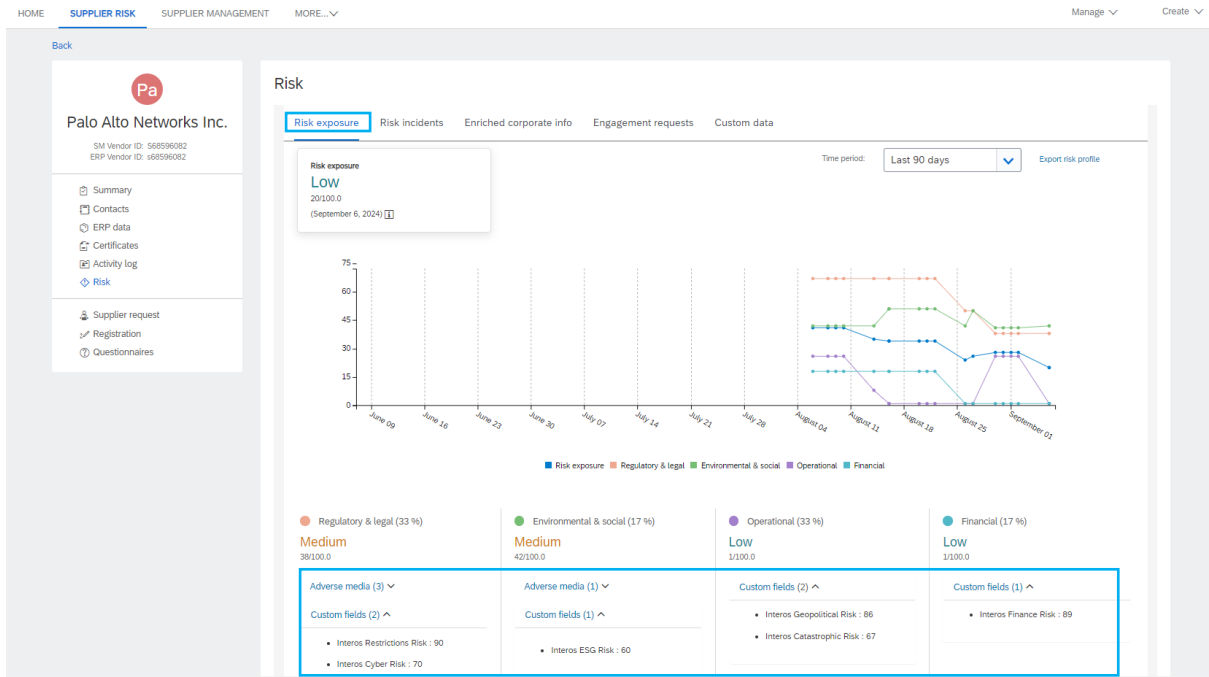
Click on the “Risk” option located in the left menu frame to open the supplier’s full risk profile in Ariba Supplier Risk.

The screenshot displays the SAP Ariba Supplier Risk profile for Palo Alto Networks Inc. The interface includes a top navigation bar with 'SAP' and 'SUPPLIER RISK' tabs. A left sidebar contains navigation options like 'Summary', 'Contacts', 'ERP data', 'Certificates', 'Activity log', and 'Risk' (highlighted). The main content area is divided into several sections:

- About:** Registration Status: Not Invited; Preferred Status: Not Preferred; ERP Integration Status: Not Integrated; Qualification Status: Not started; Onboarding time: Not Available; Created On: Aug 5, 2024.
- Supplier IDs:** SM Vendor ID: S68596082; ERP ID: s68596082; AN ID: Not Available; ACM ID: ACM_194681030.
- Overall supplier risk:** Low Risk.
- Risk Exposure Table:**

Risk Category	Level	Exposure
Regulatory and legal	Medium	38/100
Environment and social	Medium	42/100
Financial	Low	1/100
Operational	Low	1/100
- Address:** 3000 Tannery Way, Santa Clara, 95054, US, California.
- User Profile:** Gaurav Gupta, Email ID: gaurav.gupta@bcone.com, Phone: 8769879876, Mobile: Not Available.

The Risk Exposure view shows the risk profile trends for the supplier and displays the six Interos Risk Factor scores as custom fields below each of the four Ariba risk categories.



The “Custom data” view provides deep links for easy access to additional risk details for that supplier in the Interos Resilience platform. Click on the icon in the URL column to go the related page within Interos for each row.

Risk

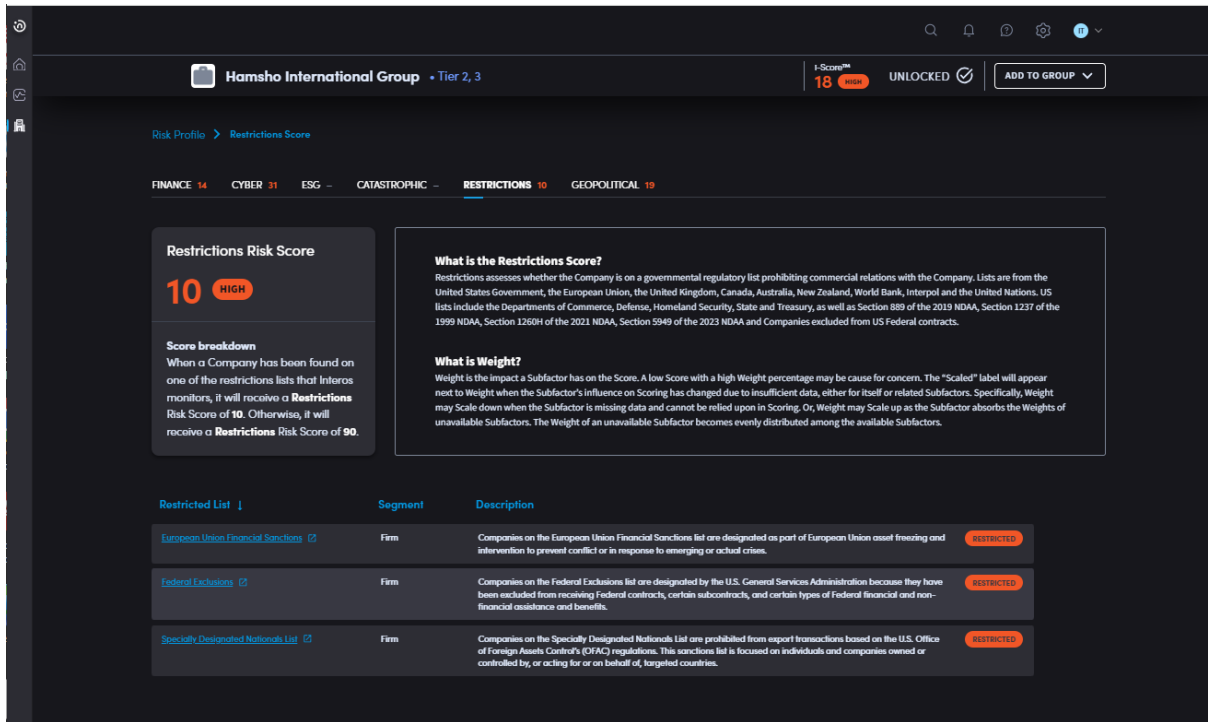
Risk exposure | Risk incidents | Enriched corporate info | Engagement requests | **Custom data**

Risk category	Risk exposure
Environmental & social (1)	Medium
Regulatory & legal (5)	Medium
Operational (2)	Low
Financial (1)	Low

Name	Value	Update date	URL	Notes	Source	Contributing
Interos Restriction Count	0	Aug 15, 2024	Click URL to see restrictions for this supplier	Interos	✗	
Supplier's T1s Restricted	0	Aug 15, 2024	Click URL to see restricted sub-tier suppliers	Interos	✗	
Supplier's T2s Restricted	10	Aug 15, 2024	Click URL to see restricted sub-tier suppliers	Interos	✗	
Interos Cyber Risk	70	Sep 6, 2024	Click URL for Interos Cyber risk details	Interos	✓	
Interos Restrictions Risk	90	Sep 6, 2024	Click URL for Interos Restrictions risk details	Interos	✓	

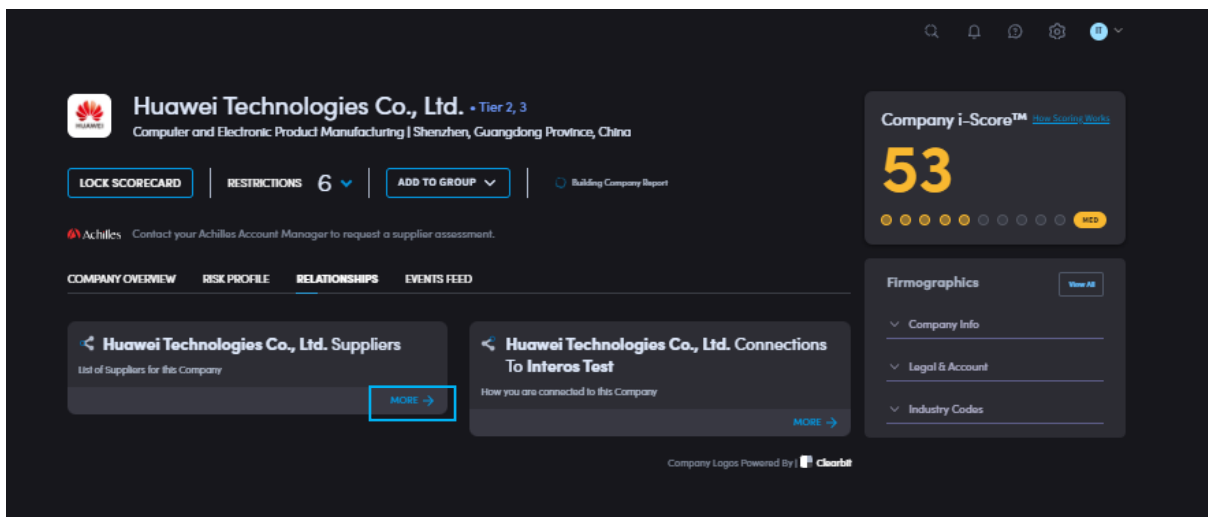
The view above also provides counts of the number of restrictions lists tied to the supplier as well as how many of their T1 or T2 suppliers are associated with one or more restrictions lists.

To explore the specific restrictions for the supplier, expand the “Regulatory & legal” section, then click on the icon in the URL column for the “Interos Restriction Count” row. This will bring up the Interos Restrictions page for that supplier (see example below.)

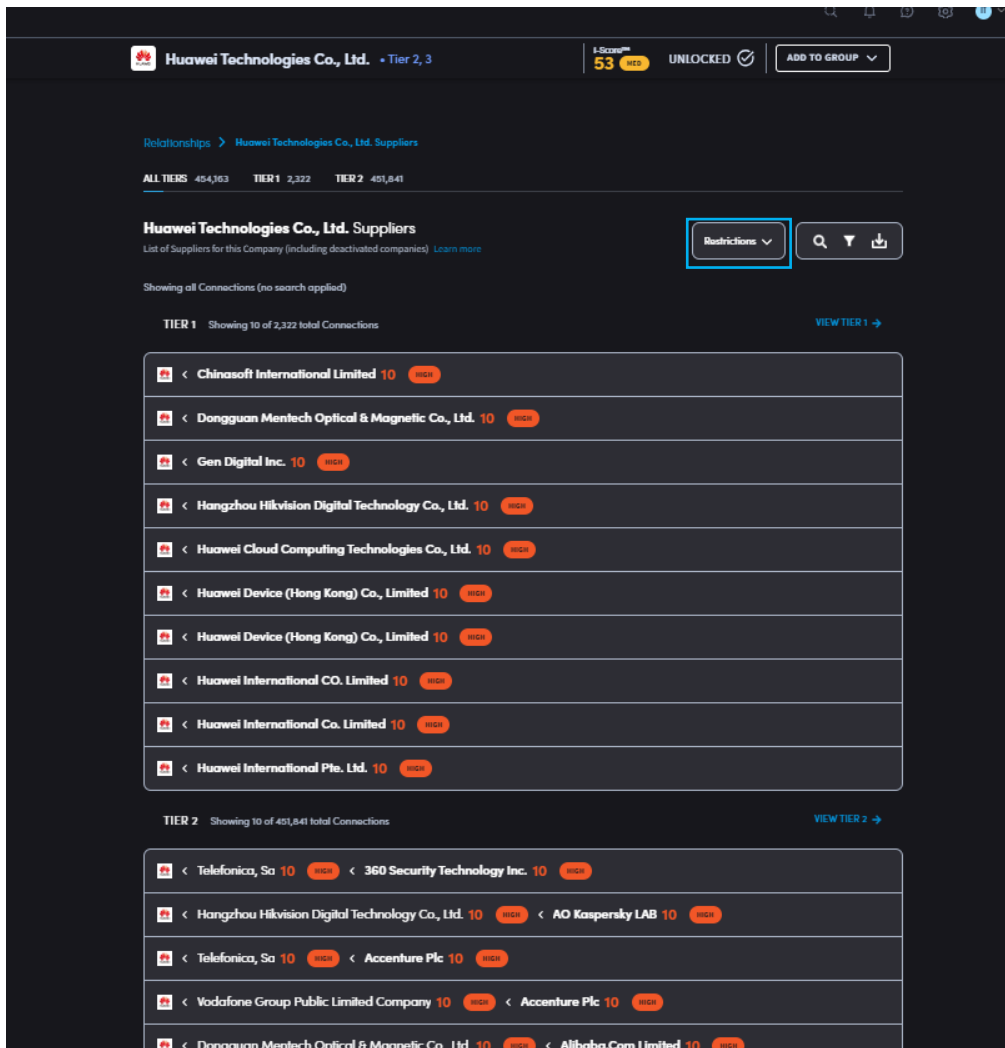


To see the sub-tier suppliers of this supplier who are associated with one or more restrictions lists, expand the “Regulatory & legal” section, then click on the icon in the URL column for the “Supplier’s T1 Restricted” or “Supplier’s T2 Restricted” rows. This will bring up the Interos Relationships page for the supplier.

Click “More →” on the left tile to display the list of the suppliers T1 and T2 suppliers.



Then change the first filter from “i-Score™” to “Restrictions” to show the list of sub-tier suppliers with a High restrictions score.



Support Information

For assistance or questions related to this integration, please contact the Interos support team or reach out to your Customer Success Manager.

- **Email:** support@interos.ai
- **Phone:** +1 (703) 745-5578
- **Website:** www.interos.ai