



INTERNAL

SAP Ariba Sourcing integration with SAP S/4HANA for Central Procurement

Pre-packaged Cloud Integration content
Setup instructions

TABLE OF CONTENTS

1	SUPPORTED SYSTEMS	3
2	INTEGRATION FLOWS	3
2.1	Forward Central Request for Quotation from SAP S4HANA to SAP Ariba Sourcing	3
2.1.1	<i>Configurable parameters</i>	3
2.2	Forward Central Supplier Quotation from SAP Ariba Sourcing to SAP S4HANA	4
2.2.1	<i>Configurable parameters</i>	4

SAP S/4HANA and SAP S/4HANA Cloud can send Central Request for Quotation (RFQ) documents for execution to SAP Ariba Sourcing and can receive the awarded supplier quotes either as Purchase Orders or Central Contract documents with line-item pricing information.

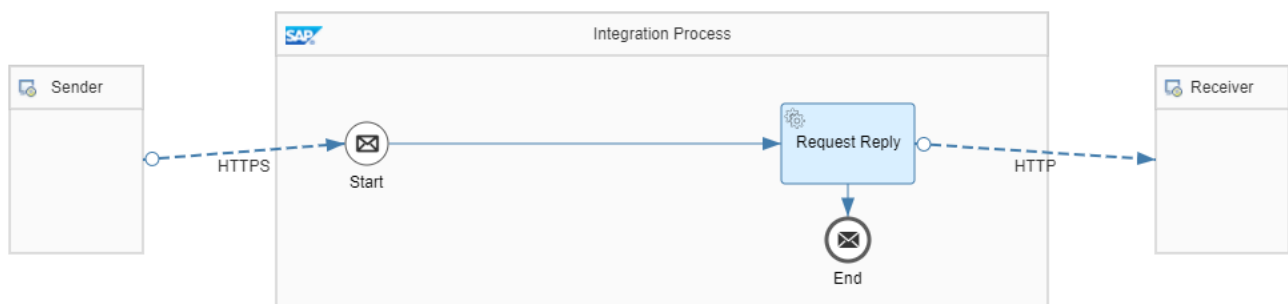
1 SUPPORTED SYSTEMS

The package supports all systems that support the scope item 4QN, which include SAP S/4HANA Cloud and SAP S/4HANA 2020 FPS01.

2 INTEGRATION FLOWS

Due to the nature of the APIs exposed by both SAP Ariba Sourcing and SAP S/4HANA, all iFlows perform a simple pass-through of SOAP messages via HTTP adapters, allowing transfer of the headers *Content-Type* and *Accept*.

2.1 Forward Central Request for Quotation from SAP S4HANA to SAP Ariba Sourcing

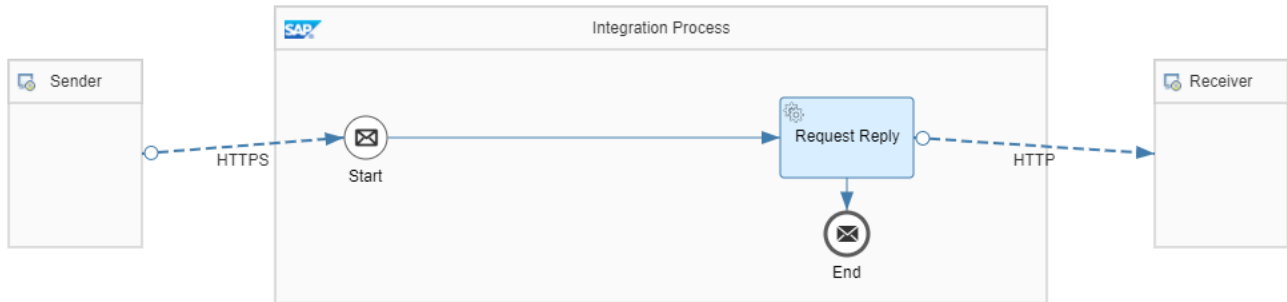


2.1.1 Configurable parameters

The details required to configure this flow are:

- Ariba Credentials: the username and password configured in SAP Ariba Buying on the Endpoint assigned to this WebService
- Ariba Service Hostname and Port: depending on the datacenter where your SAP Ariba solution runs, the hostname varies. It can be retrieved from the browser while connected to it, or from the Endpoint Configuration section while enabling WebServices.
Add after it explicitly port 443, ex: s1-integration.ariba.com:443
- Realm ID: your SAP Ariba solution tenant ID. It can be retrieved from the login URL used to connect to the application:
 - o <http://realmID.sourcing.ariba.com>
 - o <https://s1.ariba.com/Sourcing/main/?realm=realmID>

2.2 Forward Central Supplier Quotation from SAP Ariba Sourcing to SAP S4HANA



2.2.1 Configurable parameters

The details required to configure this flow are:

- S/4HANA Business System (used to allow multiple copies of the integration package to be deployed on the same tenant)
- S/4HANA protocol: "http" for SAP S/4HANA OnPremise systems, "https" for SAP S/4HANA Cloud
- S/4HANA hostname and port (API endpoint in case of SAP S/4HANA Cloud, and Virtual Hostname in case of connection through SAP Cloud Connector)
- S/4HANA Service Path (the default value corresponds to the path exposed by S/4HANA Cloud)
- S/4HANA Client (100 in case of S/4HANA Cloud)
- S/4HANA Proxy Type (Internet or OnPremise)
- Location ID (only in case of Proxy Type: OnPremise)
- S/4HANA Credential Type (Basic or Client Certificate)
- S/4HANA Credentials (name of the credential object deployed in CI as Security Material)

www.sap.com/contactsap

© 2018 SAP SE or an SAP affiliate company. All rights reserved.

No part of this publication may be reproduced or transmitted in any form or for any purpose without the express permission of SAP SE or an SAP affiliate company.

The information contained herein may be changed without prior notice. Some software products marketed by SAP SE and its distributors contain proprietary software components of other software vendors. National product specifications may vary.

These materials are provided by SAP SE or an SAP affiliate company for informational purposes only, without representation or warranty of any kind, and SAP or its affiliated companies shall not be liable for errors or omissions with respect to the materials. The only warranties for SAP or SAP affiliate company products and services are those that are set forth in the express warranty statements accompanying such products and services, if any. Nothing herein should be construed as constituting an additional warranty.

In particular, SAP SE or its affiliated companies have no obligation to pursue any course of business outlined in this document or any related presentation, or to develop or release any functionality mentioned therein. This document, or any related presentation, and SAP SE's or its affiliated companies' strategy and possible future developments, products, and/or platform directions and functionality are all subject to change and may be changed by SAP SE or its affiliated companies at any time for any reason without notice. The information in this document is not a commitment, promise, or legal obligation to deliver any material, code, or functionality. All forward-looking statements are subject to various risks and uncertainties that could cause actual results to differ materially from expectations. Readers are cautioned not to place undue reliance on these forward-looking statements, and they should not be relied upon in making purchasing decisions.

SAP and other SAP products and services mentioned herein as well as their respective logos are trademarks or registered trademarks of SAP SE (or an SAP affiliate company) in Germany and other countries. All other product and service names mentioned are the trademarks of their respective companies. See www.sap.com/copyright for additional trademark information and notices.