



# **Salesforce Adapter and Plug-in Installation Guide**

For SAP Integration Suite and SAP Cloud Integration

Version 1.1.33 – February 2026

**THE BEST RUN**



# Table of Contents

1	Introduction .....	3
2	Package Content .....	3
2.1	Adapter.....	3
2.2	Plug-in.....	3
3	Adapter Installation.....	4
3.1	Adapter Installation for Neo.....	4
3.1.1	Prerequisites .....	4
3.1.2	Procedure .....	4
4.2	Adapter Installation on Cloud Foundry .....	5
4.2.1	Prerequisites .....	5
4.2.2	Procedure.....	5
4.2.3	Monitor the Deployment Status.....	8
5	Plug-in Installation Steps .....	8

## Introduction

This is the official guide for the installation of the Salesforce Adapter for SAP Cloud Integration. This guide covers all relevant information for registering an application in Salesforce and installing and configuring the Salesforce Plug-in to Oxygen.

Please read this guide carefully before using the Salesforce Adapter.

### 1.1 Coding Samples

Any software coding and/or code lines/strings ("Code") included in this documentation are only examples and are not intended to be used in a productive system environment. The Code is only intended to better explain and visualize the syntax and phrasing rules of certain coding. The correctness and completeness of the Code given herein are not assured.

### 1.2 Internet Hyperlinks

The documentation may contain hyperlinks to the Internet. These hyperlinks are intended to serve as hints on where to find related information. The availability and the correctness of these links to serve a particular purpose are not warranted.

## 2 Package Content

**Note:** *This section is only relevant to Adapter Installation on Neo. Cloud Foundry users can skip this section.*

This section provides the details of files that are included in the installation package. It is assumed that the bundle is downloaded from the SAP Marketplace which would contain files listed in Sections 2.1 and 2.2.

### 2.1 Adapter

The Salesforce Adapter installation package consists of the files below:

File Name	Description
Salesforce.esa	adapter .esa File

### 2.2 Plug-in

The Salesforce Adapter Plug-in installation package consists of files below:

File Name	Description
Salesforce-plug-in_<version>.jar	The Eclipse Plug-in or workbench file

## 3 Adapter Installation

The Adapter archive file (.esa) can be found in the ZIP file downloaded from the SAP Marketplace in the folder: /Adapter.

The file is called "salesforce.esa". The next steps are dependent on whether the SAP Cloud Integration tenant is in Neo (Section 4.1) or Cloud Foundry (Section 4.2).

### 3.1 Adapter Installation for Neo

Before the adapter can be used in the Neo environment, it needs to be deployed to the SAP Cloud Integration tenant.

#### 3.1.1 Prerequisites

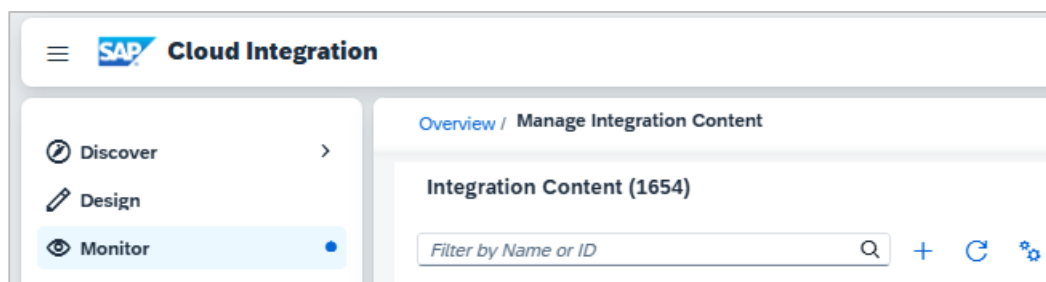
To use the document, the following conditions are assumed:

- The Adapter bundle is downloaded from the SAP Marketplace.
- The SAP recommended version of Eclipse is downloaded and installed. Currently, Eclipse Oxygen is preferred. To get the latest SAP recommendation, visit the link: <https://tools.hana.ondemand.com/#cloudintegration>

#### 3.1.2 Procedure

To install the Adapter in the Neo environment, follow the below steps:

1. In SAP Integration Suite, navigate to **Monitor > Manage Integration Content** section.
2. Under **Integration Content**, Click on  icon.



3. A popup window labelled **Deploy Integration Adapter** opens up. Choose **Browse** to import integration adapter file (\*.esa). **Name**, **ID**, and **Version** fields get auto filled.

**Deploy Integration Adapter**

Integration Adapter: \*  [Browse...](#)

Name:

ID:

Version:

[Deploy](#) [Cancel](#)

4. Click **Deploy** to initiate the adapter deployment.
5. Verify the deployment status by refreshing the page. After successful deployment, you can see the following message.

**Salesforce** [Undeploy](#) [Download](#)

Deployed On: Aug 08, 2025, 15:29:22 ID:  Package:

Deployed By:  Version:

**Status Details**

✔ The Integration Adapter is deployed successfully.

## 4.2 Adapter Installation on Cloud Foundry

Before the Salesforce Adapter can be used in the Cloud Foundry environment, it needs to be deployed to the SAP Cloud Integration tenant.

### 4.2.1 Prerequisites

Before installing the adapter using this approach, ensure that the following prerequisites are in place:

- There should not be any .esa file of the **Salesforce Adapter in the SAP Integration Suite Design** workspace. In case this package exists, remove the .esa file from the Design workspace.
- The package "Salesforce Adapter for SAP Integration Suite" should not be in the Design workspace of the SAP Integration Suite tenant. In case this package exists, delete it.

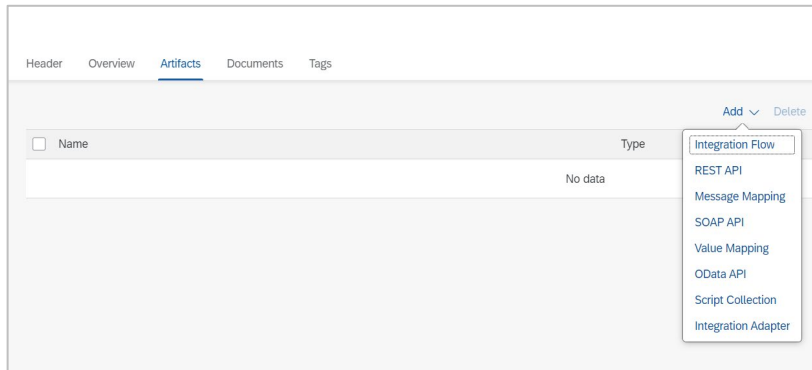
### 4.2.2 Procedure

You can deploy the adapter using the following methods:

#### a) Adapter Installation by Creating a New Integration Flow

It is important to note that there is no manual way of installing the Salesforce Adapter. The following procedure explains how the Salesforce Adapter can be migrated from the **Discover** workspace to the **Design** workspace of the SAP Integration tenant.

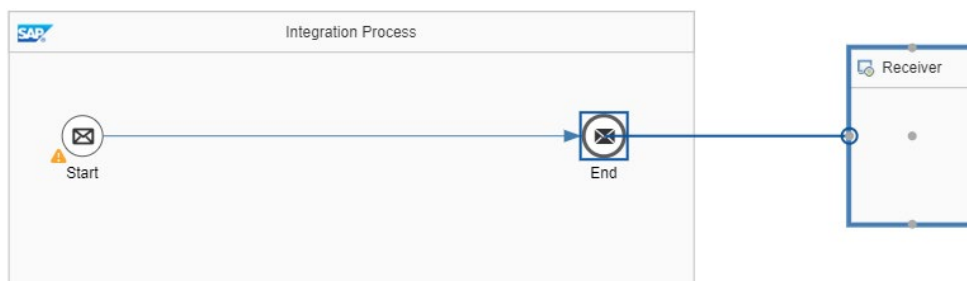
1. Navigate to the **Design** tab to access the workspace.
2. Select the integration package where the integration flow must be created.
3. Choose **Edit** to enable editing of the package.
4. Navigate to the **Artifacts** tab. Choose **Add** and select Integration Flow.



5. Create an integration flow and provide a name.
6. Proceed to the newly created integration flow and click on **Edit**.
7. Select **End**. Choose the arrow-right icon (→).



8. Drag the pointer to the Receiver box.



9. Select the Salesforce Adapter from the list of existing adapters.

Salesforce (Vendor: rojoconsultancy.com)
SalesforcePubSub
ServiceNow (Vendor: rojoconsultancy.com)

10. After selecting Salesforce Adapter, the Adapter is imported into the **Design** workspace of the SAP Integration Suite tenant.
11. Once the package is imported, the adapter deployment is triggered.
12. Once the Salesforce Adapter is deployed, a success message is displayed.

#### **b) Adapter Installation without creating an Integration Flow**

Alternatively, the Salesforce Adapter can also be imported into the Design workspace without creating an integration flow. This method is useful for scenarios where integration flow packages are migrated from development to a higher environment (Example: Production).

Use Transport Management Service (TMS) to import/transport the Salesforce Adapter to a higher environment.

If the TMS option is not available in the landscape, the Adapter Package can be imported from the Discover workspace to the Design workspace via the copy option of the former.

Proceed as follows to copy the integration package and import the Salesforce Adapter:

1. Navigate to the **Discover** tab.
2. Using the search box, search for "Salesforce Adapter for SAP Integration Suite".
3. Select the "Salesforce Adapter for SAP Integration Suite" package.
4. Navigate to the **Copy** option. Click **Copy** to replicate the package from the **Discover** workspace to the **Design** workspace.
5. Navigate to the **Design** workspace and select the Salesforce Adapter for SAP Integration Suite package.
6. Select **Artifacts** tab and choose the Deploy action to deploy the Salesforce Adapter.

### 4.2.3 Monitor the Deployment Status

1. Under the **Monitor** tab, click **Integrations and APIs**. This opens the **Overview** page.
2. On the **Overview** page, go to the **Manage Integration Content** section and click **All**. This opens the **Integration Content** page with a list of all the deployed adapters.

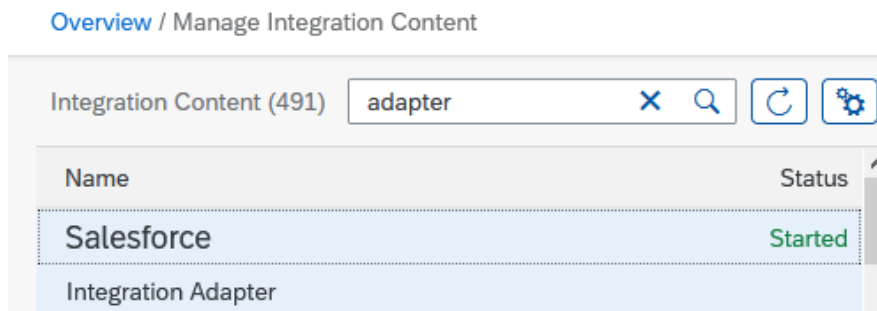


Figure 4.10 Checking the status of the deployed Integration Adapter

### 5 Plug-in Installation Steps

Follow the steps below to install Salesforce Plug-in in Eclipse Oxygen:

1. Download Eclipse Oxygen 3a from the URL:  
<https://www.eclipse.org/downloads/packages/release/oxygen/3a>
2. Once installed, copy the Salesforce Plug-in JAR file.
3. Go to the installation folder (e.g.: C:\Program Files (x86)\oxygen\eclipse).
4. Open the Plug-ins folder and paste the Salesforce Plug-in JAR file. The exact name of the file can be found in Section 2.2.
5. Open Eclipse Oxygen.
6. Navigate to Windows. Select Perspective and click on Open Perspective. Proceed to Other (See Figure 05.1).

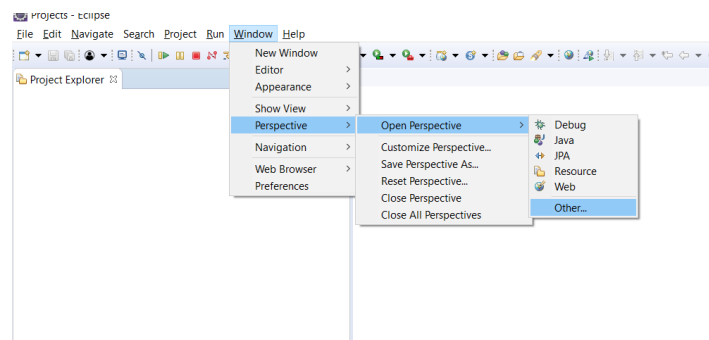
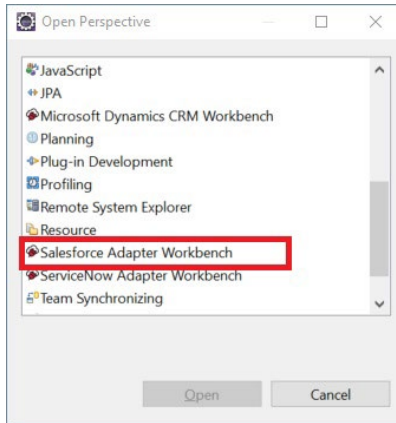


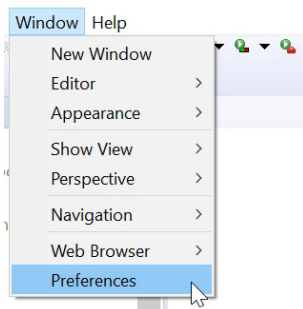
Figure 05.1 Changing perspective

7. Select Salesforce Plug-in and click on Open (See Figure 05.2).



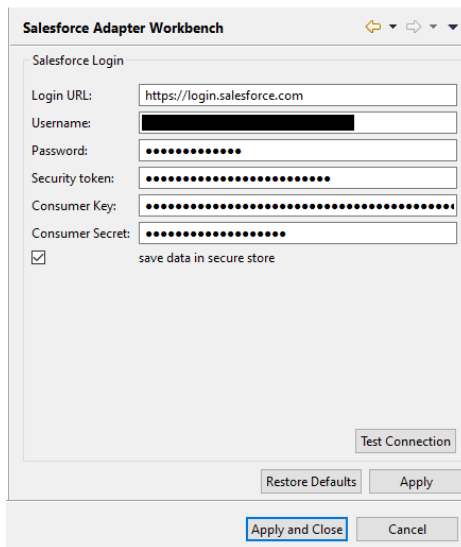
**Figure 05.2 Selecting the Adapter Perspective**

8. Return to the previous view and navigate to Window. Select Preferences.



**Figure 05.3 Selecting the Preference Option**

9. Select Salesforce Plug-in. Fill in the Salesforce Address, Username, Password, and Client ID. These details can be obtained in the Salesforce tenant.



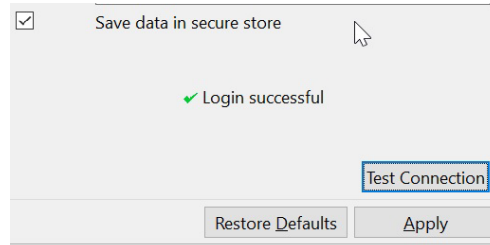
**Figure 05.4 Salesforce Workbench Connection Configuration**

**Note:** For Salesforce production environments, use <https://login.salesforce.com> As Login URL. For Sandbox environments, use <https://test.salesforce.com>. In case MyDomain is enabled in the organization, <https://<MyDomain>.my.salesforce.com> can be used.

The Salesforce guide documents how to find the respective login credentials needed to set up the Salesforce connection to the specific tenant via an OAuth 2.0 app.

Test the connection. If there are no issues, click on Apply and Close.

10. If the configuration details are correct, a login successful message appears as shown in Figure 05.5. Ensure that the connection is successful before proceeding to use the Adapter and the plug-ins.



**Figure 05.5 Successful Connection of Plug-in**

To start using the Adapter and the Plug-in, refer to the Salesforce Adapter Guide.

[www.sap.com/contactsap](http://www.sap.com/contactsap)

© 2022 SAP SE or an SAP affiliate company. All rights reserved.

No part of this publication may be reproduced or transmitted in any form or for any purpose without the express permission of SAP SE or an SAP affiliate company.

The information contained herein may be changed without prior notice. Some software products marketed by SAP SE and its distributors contain proprietary software components of other software vendors. National product specifications may vary.

These materials are provided by SAP SE or an SAP affiliate company for informational purposes only, without representation or warranty of any kind, and SAP or its affiliated companies shall not be liable for errors or omissions with respect to the materials. The only warranties for SAP or SAP affiliate company products and services are those that are set forth in the express warranty statements accompanying such products and services, if any. Nothing herein should be construed as constituting an additional warranty.

In particular, SAP SE or its affiliated companies have no obligation to pursue any course of business outlined in this document or any related presentation, or to develop or release any functionality mentioned therein. This document, or any related presentation, and SAP SE's or its affiliated companies' strategy and possible future developments, products, and/or platform directions and functionality are all subject to change and may be changed by SAP SE or its affiliated companies at any time for any reason without notice. The information in this document is not a commitment, promise, or legal obligation to deliver any material, code, or functionality. All forward-looking statements are subject to various risks and uncertainties that could cause actual results to differ materially from expectations. Readers are cautioned not to place undue reliance on these forward-looking statements, and they should not be relied upon in making purchasing decisions.