



GST e-Way BILL SOLUTION FROM SAP



Developed, Maintained
and Supported by SAP



All Relevant core transactions in SAP
ERP and SAP S/4 HANA covered



Seamless Integration with
NIC system



Introduction to the e-Way Bill

The e-Way bill is an electronically generated document which is required for the movement of goods of value more than INR 50000, from one location to another. This document is generated online on the National Informatics Centre (NIC) portal for transportation of goods, both inter and intra state and includes details such as name of consignor, consignee, point of origin of consignment, consignment destination and route. Goods and Services Tax (GST) regime has mandated the generation of the e-Way bill from 1st April 2018. This replaces the Way bill which was earlier required under the VAT regime.

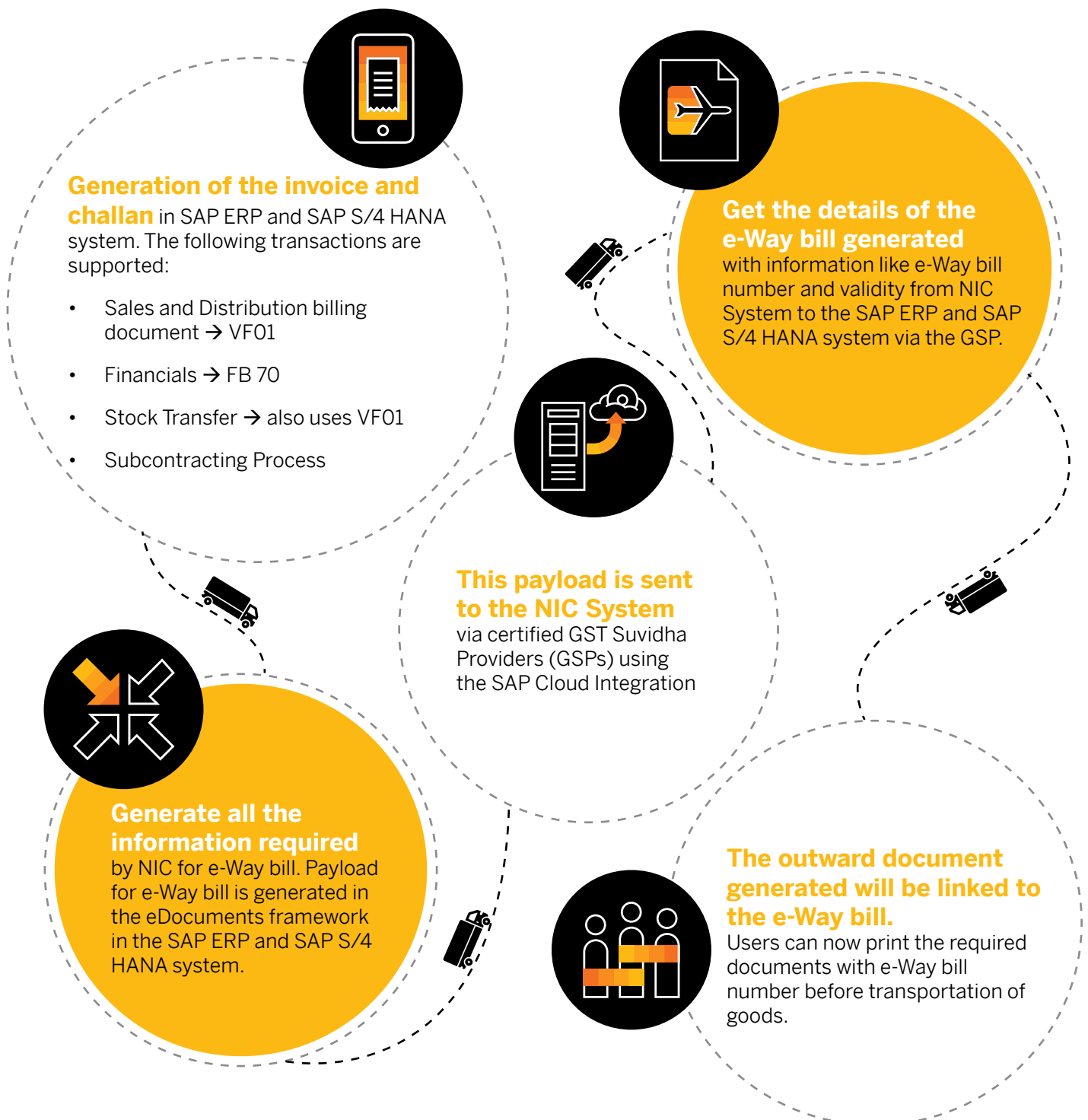
The process involves a registered tax payer generating the e-Way bill for their outward supply document on the NIC. A unique e-Way bill number (EBN) is generated for each e-Way bill and it is available to the supplier, recipient and transporter.



Scope of **e-Way Bill solution** with SAP Cloud

Process Flow:

The solution that will be made available by SAP on SAP Cloud Integration will enable the tax payer to (refer process flow shown):



Solution

Highlights

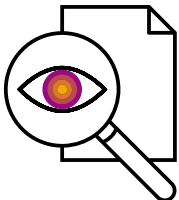


Seamless connect to NIC:

Solution provides direct integration of the SAP ERP and SAP S/4HANA systems with the NIC via certified GSPs using the SAP Cloud Integration

Scalability of the solution:

Scalability in supporting any future changes introduced by the government in SAP ERP and SAP S/4HANA which will impact e-Way bill generation Capability to scale from a technology/platform point of view



Better Manageability and Transparency:

Hassle-less payload creation for Outward Supply
Tracking and Cancellation of e-Way bill
Ability to update transporter details in case of vehicle break down, accident etc.

Validations to ensure correctness of data:

Inbuilt validations and health check tool made available to ensure all mandatory data required for e-Way bill is part of the payload.



Security:

Payload level encryption between source system, GSPs and NIC system





What has already been delivered by SAP for e-Way bill

Once the e-Way bill has been generated by the Tax payer on the NIC portal, SAP enables users / customer to link the generated e-way bill number (EWN) to an outgoing SD / FI invoice in the SAP ERP or SAP S/4HANA On Premise system and subsequently print the outgoing billing document.

SAP notes delivering this solution have been released on 16/Feb/2018

<https://launchpad.support.sap.com/#/notes/2598300>

<https://launchpad.support.sap.com/#/notes/2598492>



© 2018 SAP SE or an SAP affiliate company. All rights reserved. No part of this publication may be reproduced or transmitted in any form or for any purpose without the express permission of SAP SE or an SAP affiliate company.

The information contained herein may be changed without prior notice. Some software products marketed by SAP SE and its distributors contain proprietary software components of other software vendors. National product specifications may vary.

These materials are provided by SAP SE or an SAP affiliate company for informational purposes only, without representation or warranty of any kind, and SAP or its affiliated companies shall not be liable for errors or omissions with respect to the materials. The only warranties for SAP or SAP affiliate company products and services are those that are set forth in the express warranty statements accompanying such products and services, if any. Nothing herein should be construed as constituting an additional warranty.

In particular, SAP SE or its affiliated companies have no obligation to pursue any course of business outlined in this document or any related presentation, or to develop or release any functionality mentioned therein. This document, or any related presentation, and SAP SE's or its affiliated companies' strategy and possible future developments, products, and/or platform directions and functionality are all subject to change and may be changed by SAP SE or its affiliated companies at any time for any reason without notice. The information in this document is not a commitment, promise, or legal obligation to deliver any material, code, or functionality.

All forward-looking statements are subject to various risks and uncertainties that could cause actual results to differ materially from expectations. Readers are cautioned not to place undue reliance on these forward-looking statements, and they should not be relied upon in making purchasing decisions.

SAP and other SAP products and services mentioned herein as well as their respective logos are trademarks or registered trademarks of SAP SE (or an SAP affiliate company) in Germany and other countries. All other product and service names mentioned are the trademarks of their respective companies.